



THE ROYAL PLAYHOUSE, COPENHAGEN



The Royal Playhouse, Copenhagen  
Lundgaard & Tranberg Arkitektur  
Competition 2002, Completion 2007

## FACTS

Inner Harbour, Copenhagen



LOCATION



The Playhouse

LOCATION

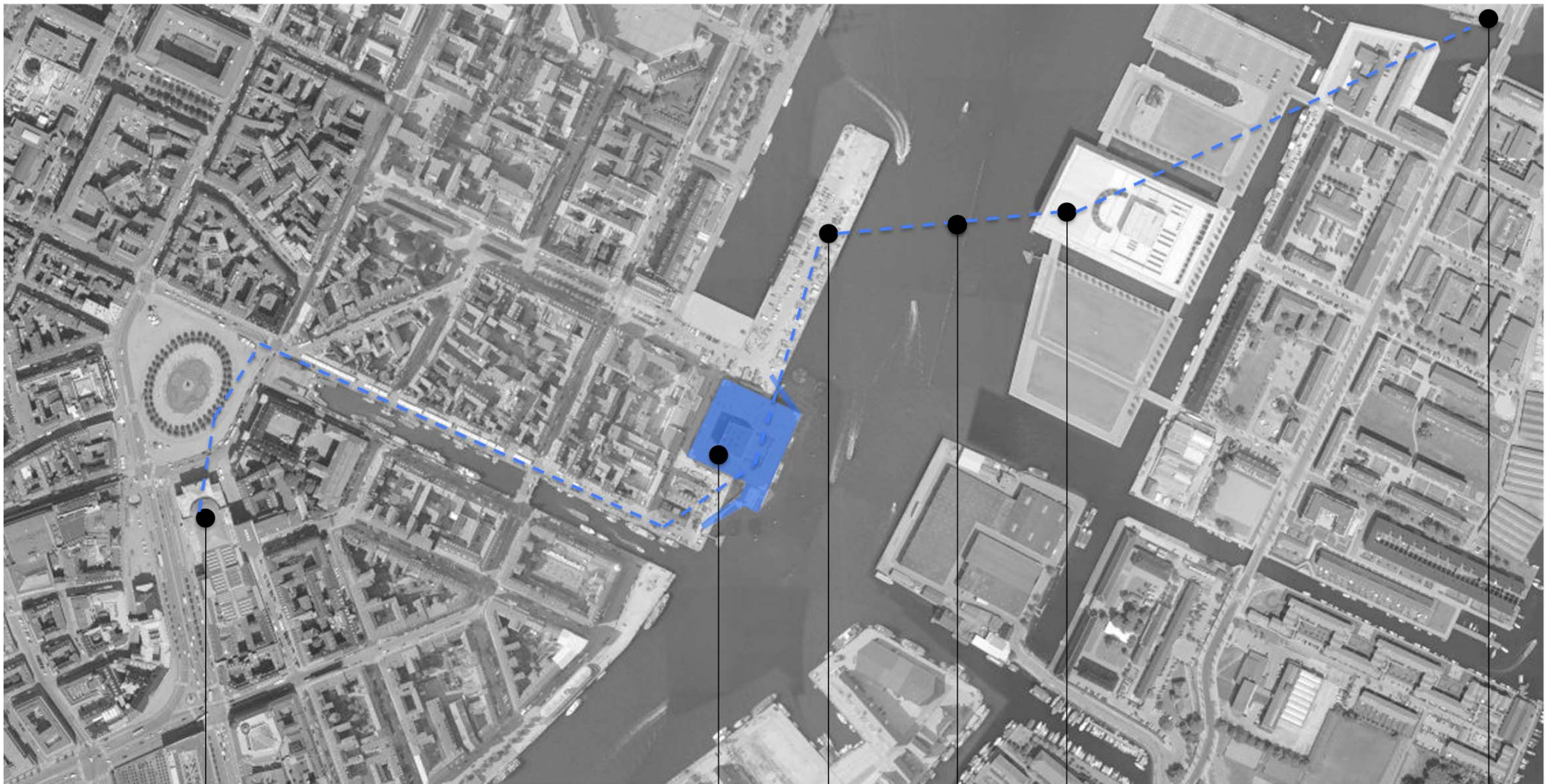


Kongens Nytorv

Nyhavn

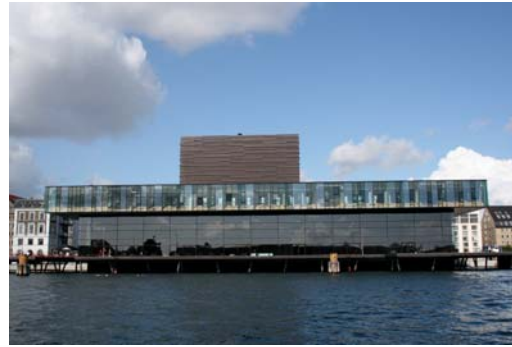
The Playhouse (2007)

## CONTEXT



- Prop & Costume Workshops
- The Opera House (2004)
- Future Footbridge
- Future Carpark
- The Playhouse (2007)
- The Old Stage (1748)

## CONTEXT – ROYAL DANISH THEATRE



Kongens Nytorv – Nyhavn ----- Promenade ----- The Playhouse ----- Warehouses ----- Palace

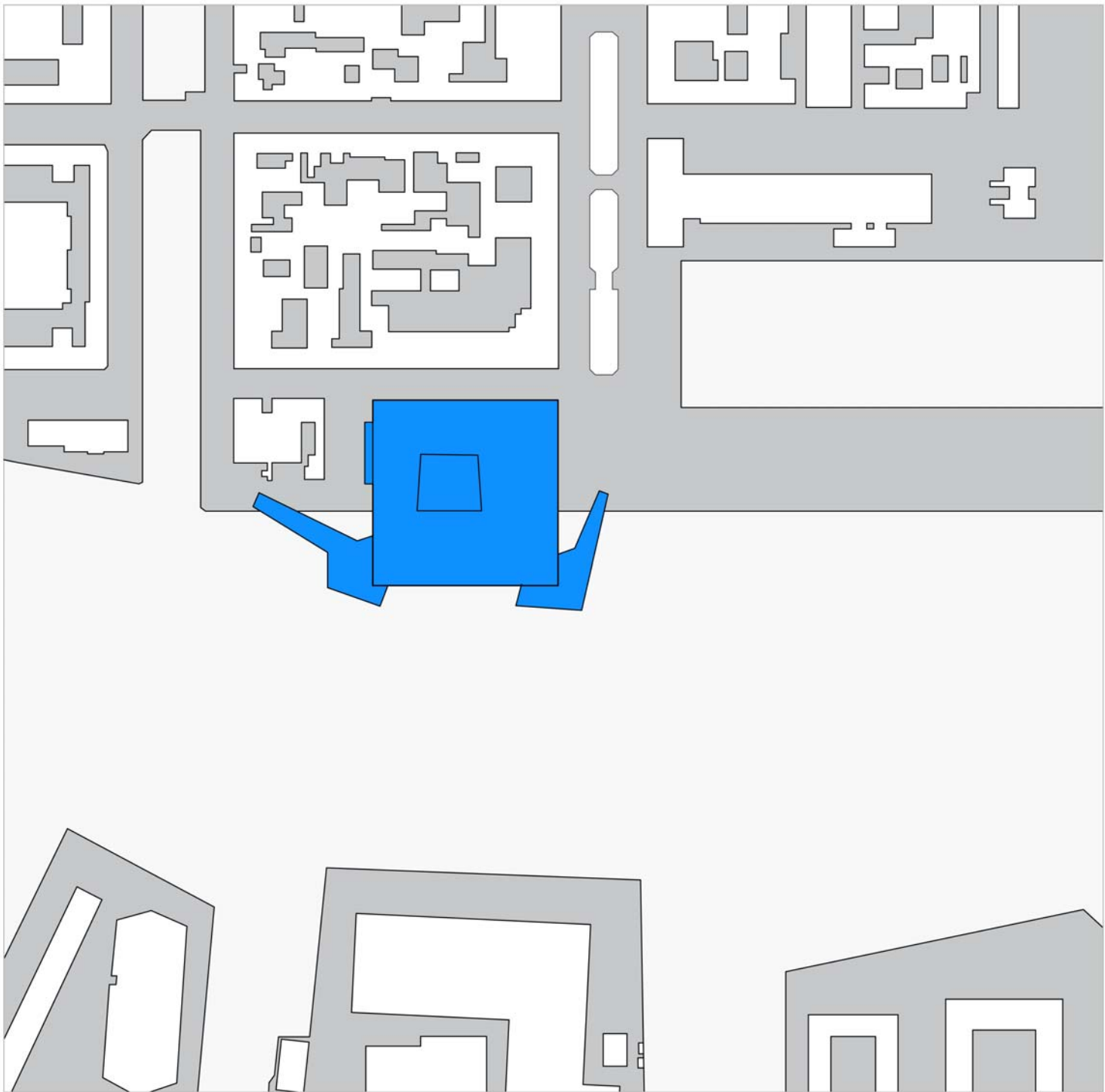
## CONTEXT



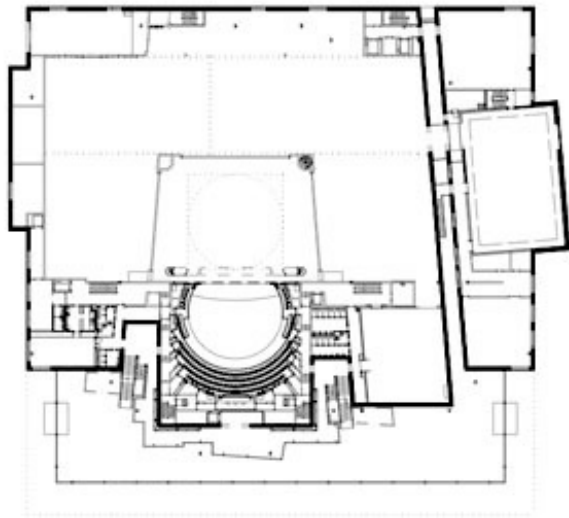
Across the Harbour ----- Converted Warehouses ----- **The Opera House** ----- Naval Buildings ----- Ocean

## CONTEXT

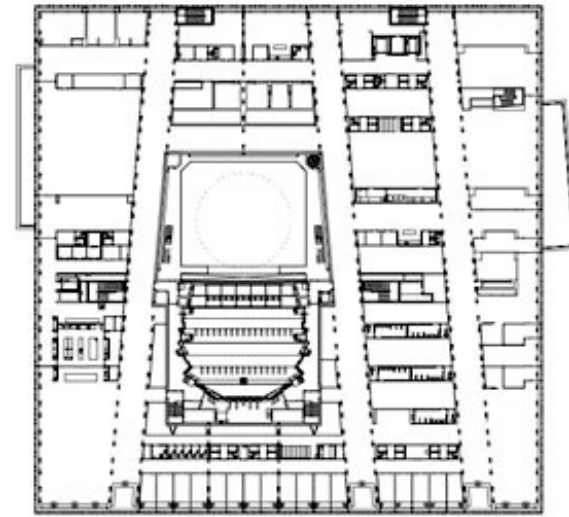




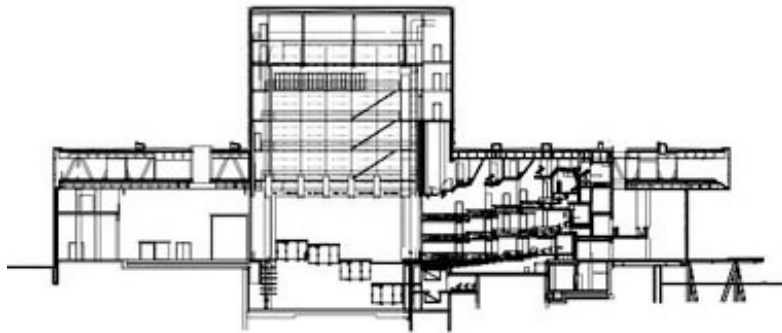
CONTEXT



Ground Level Plan



Upper Level Plan

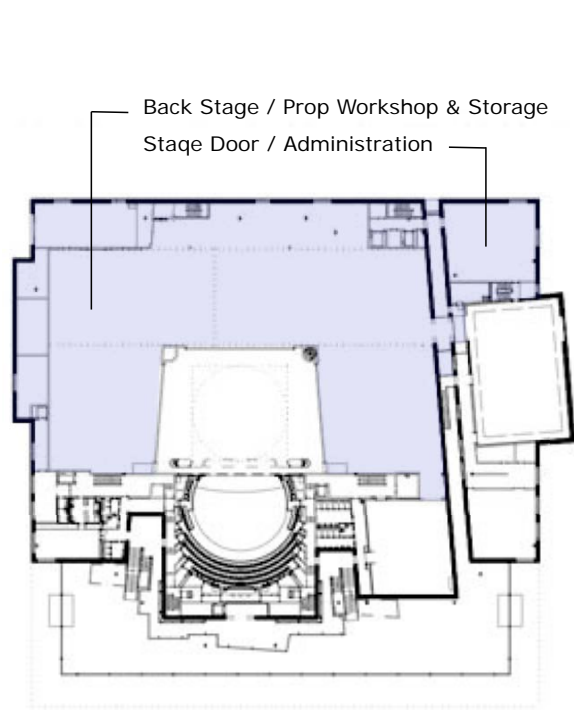


Section

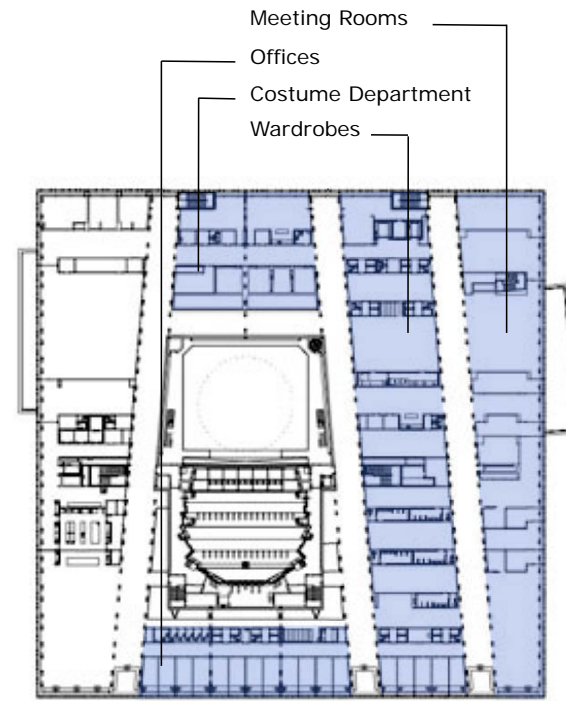


South West Elevation

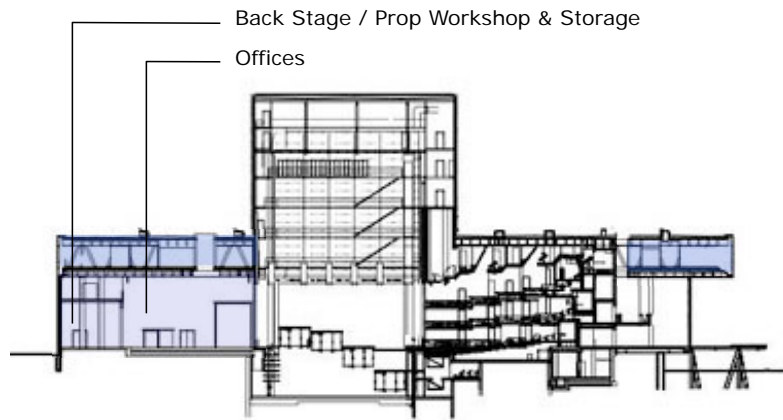
**FUNCTION**



**Ground Level Plan**



**Upper Level Plan**

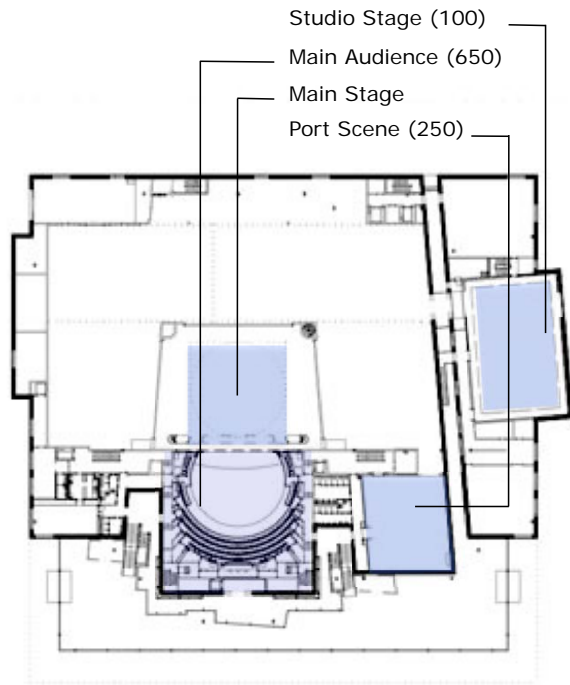


**Section**

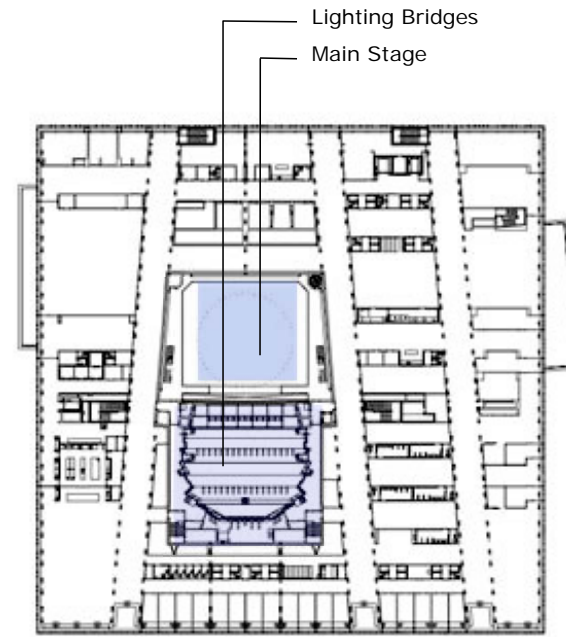


**South West Elevation**

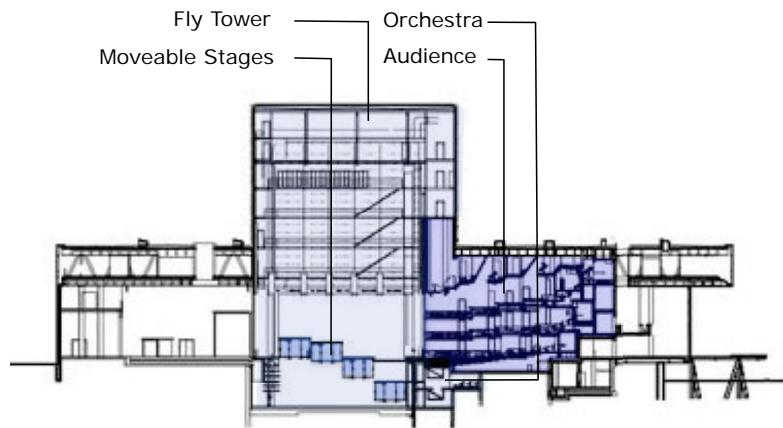
**FUNCTION – Back Stage**



**Ground Level Plan**



**Upper Level Plan**

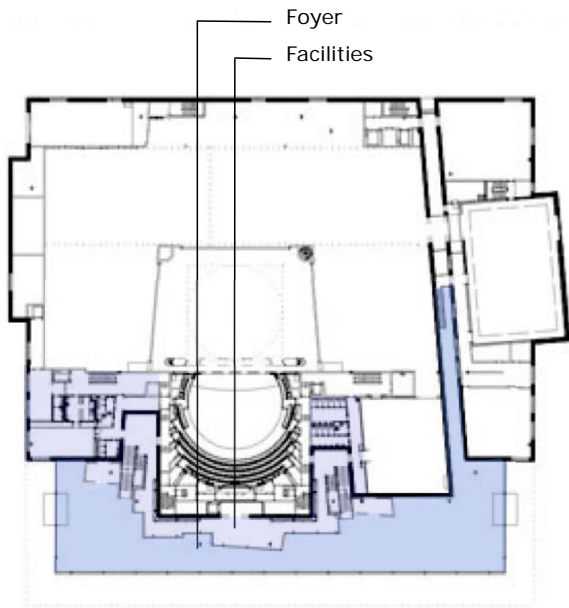


**Section**

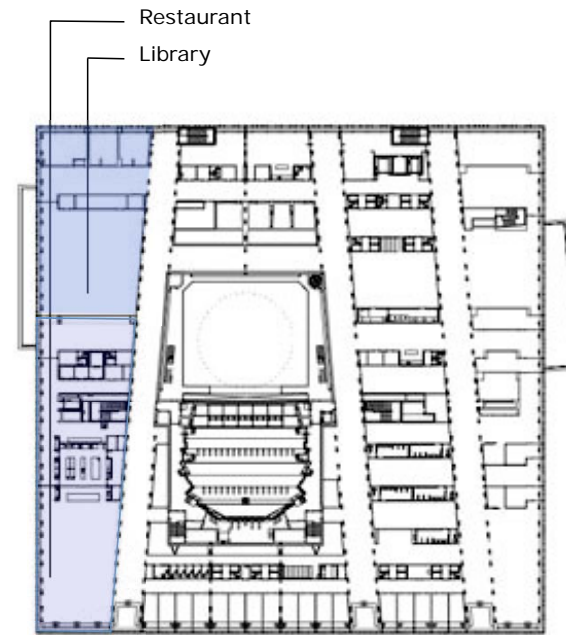


**South West Elevation**

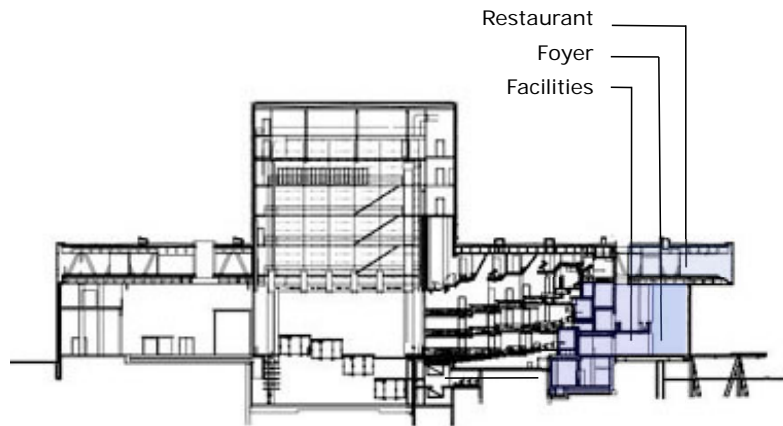
**FUNCTION - Stages**



Ground Level Plan



Upper Level Plan



Section

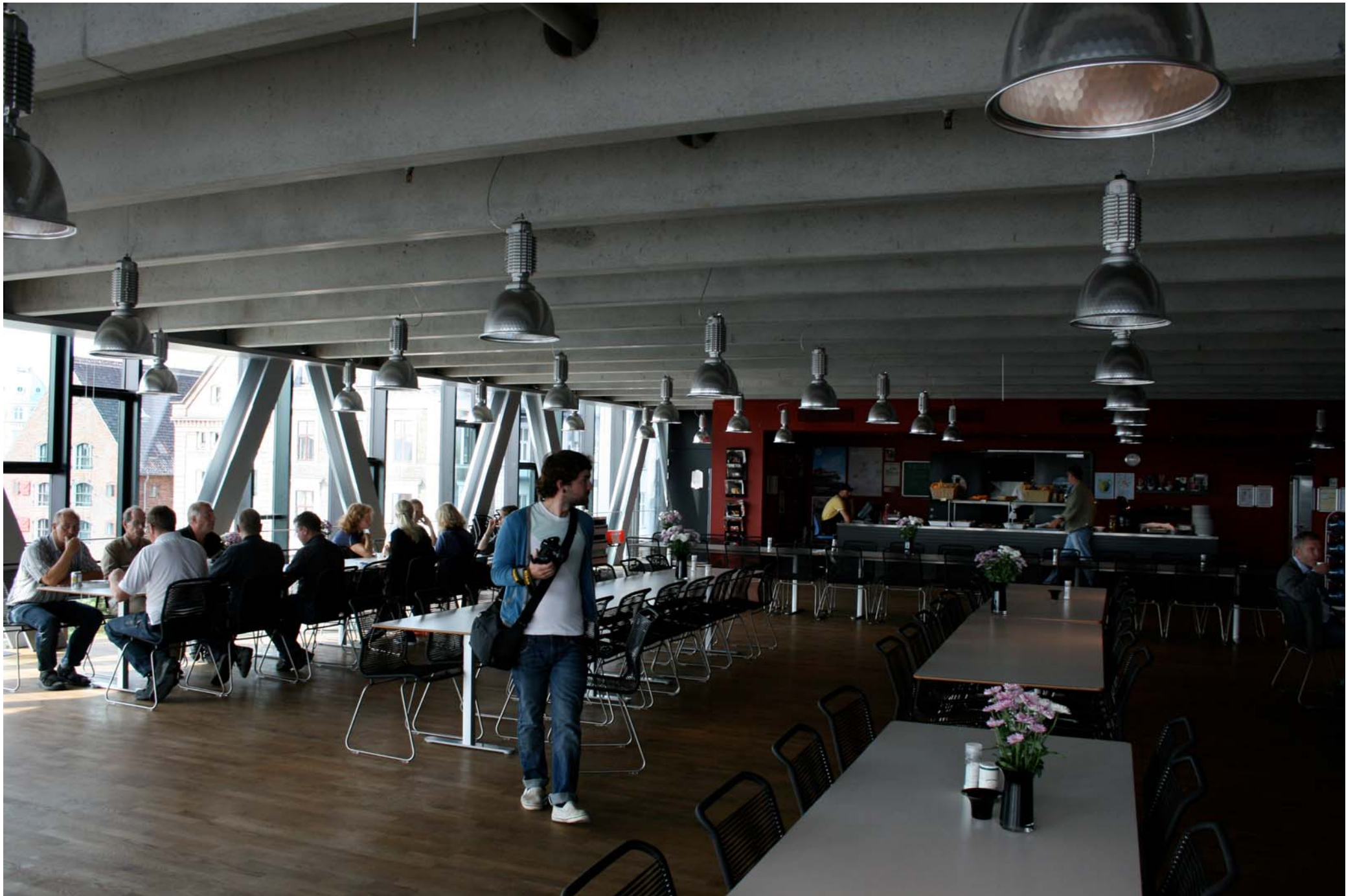


South West Elevation

**FUNCTION – Public Facilities**



FUNCTION – Small Stage



**FUNCTION – Restaurant**



FUNCTION – Script Library





**FUNCTION** – Meeting Rooms



CONSTRUCTION & MATERIALS – four elements, harsh maritime climate



**MATERIALS** – Oak Promenade – wraps around the building



**CONSTRUCTION & MATERIALS – Oak Promenade**



**CONSTRUCTION & MATERIALS – Brick Auditoriums**



**MATERIALS** – Brick Auditoriums (External) – Handmade burnt english fireclay bricks



**MATERIALS** – Brick Auditoriums (Internal) – cliff-like, raw-energy and acoustics



**MATERIALS** – Brick Auditoriums (Internal) – cliff-like, raw-energy and acoustics





**MATERIALS** – Brick Auditoriums (Internal)



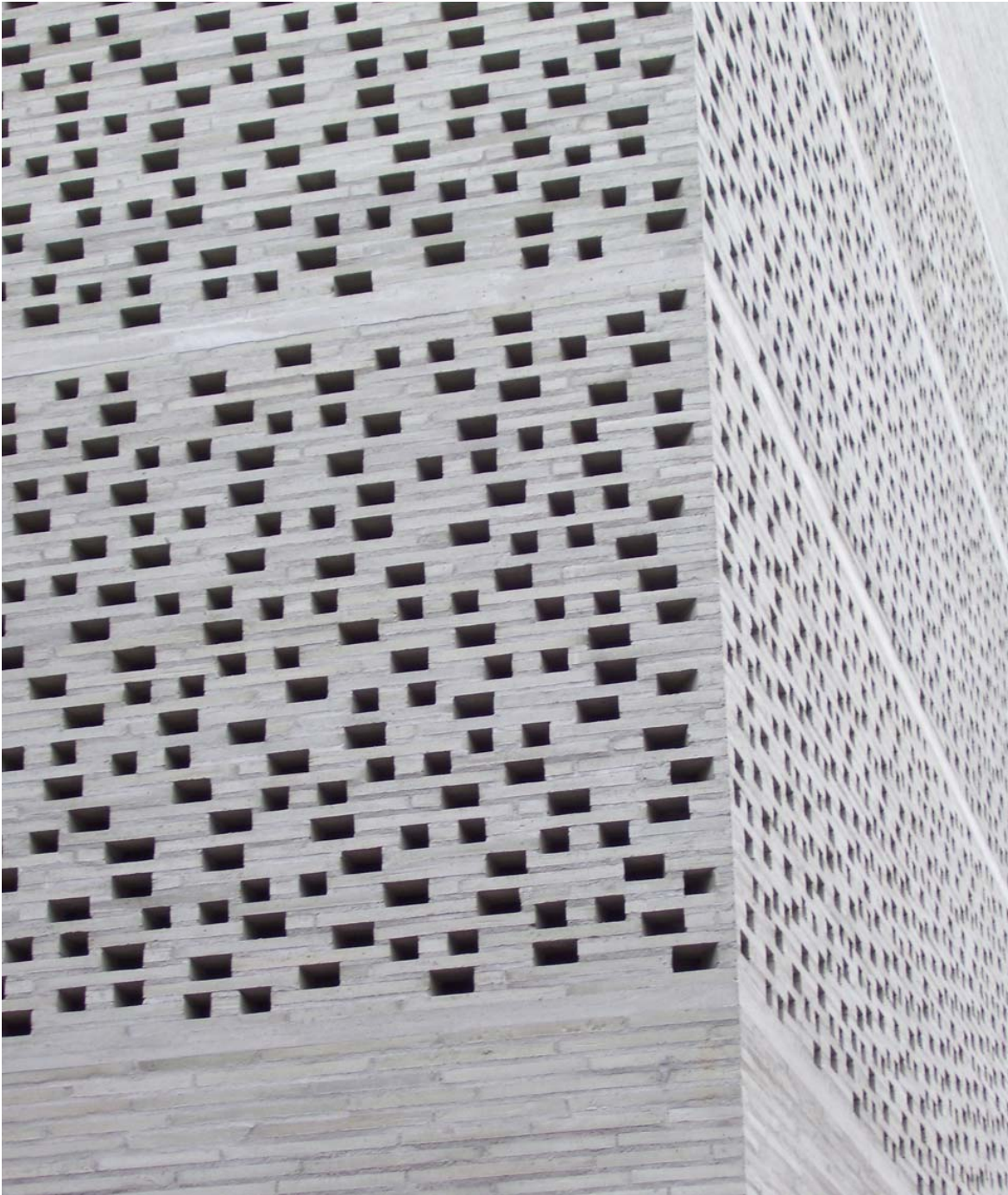
**MATERIALS** – Brick – Precedence – St Mark's Church (Sigurd Lewerentz)



**MATERIALS** – Brick – Precedence – St Mark's Church (Sigurd Lewerentz)



**MATERIALS – Brick – Precedence – Kolumba Art Museum (Peter Zumthor)**



**MATERIALS** – Brick – Precedence – Kolumba Art Museum (Peter Zumthor)



**CONSTRUCTION & MATERIALS** – Cantilevered all-glazed floor – working on display



**CONSTRUCTION & MATERIALS** – Cantilevered all-glazed floor



**CONSTRUCTION & MATERIALS** – Cooper clad fly tower

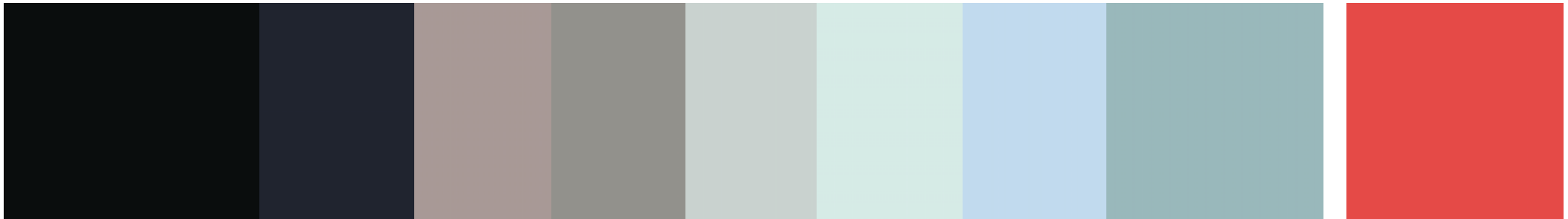




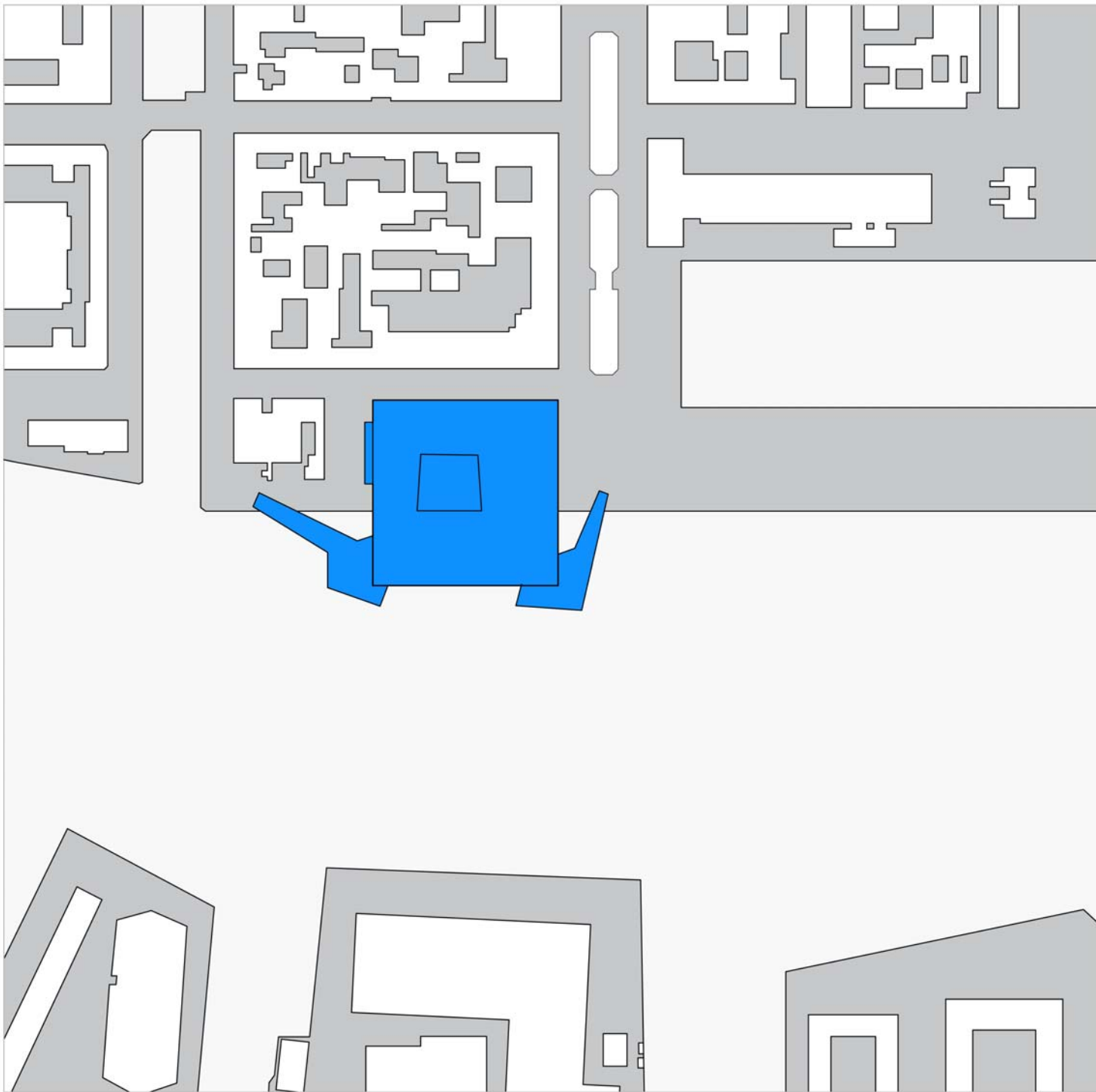
**CONSTRUCTION & MATERIALS** – Cooper clad fly tower



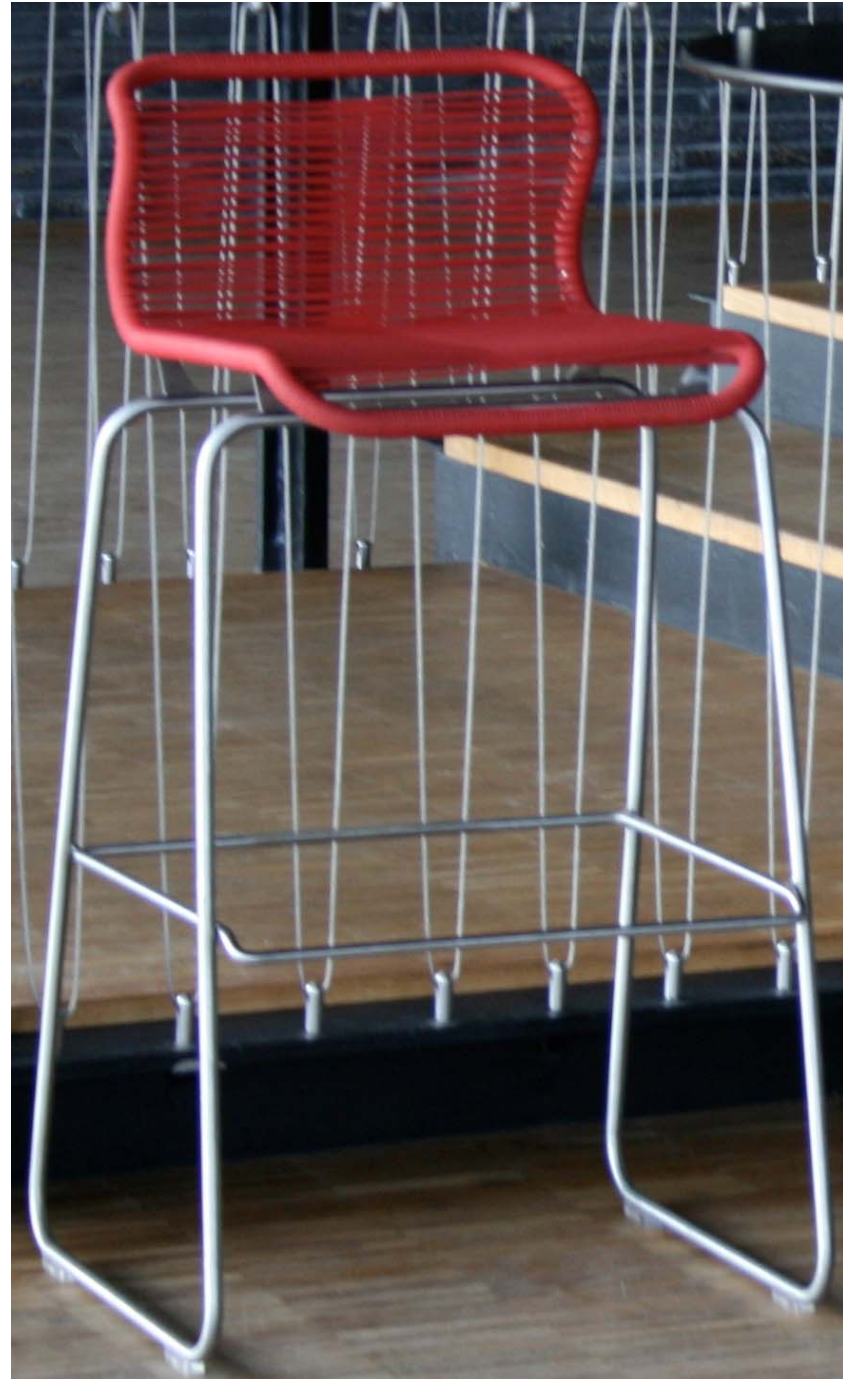
**CONSTRUCTION & MATERIALS** – Cooper clad fly tower – large scale rep. of bricks



COLOURING, CHARACTER & OVERALL APPEARANCE – evoking a moored ship



OVERALL APPEARANCE – evoking a moored ship



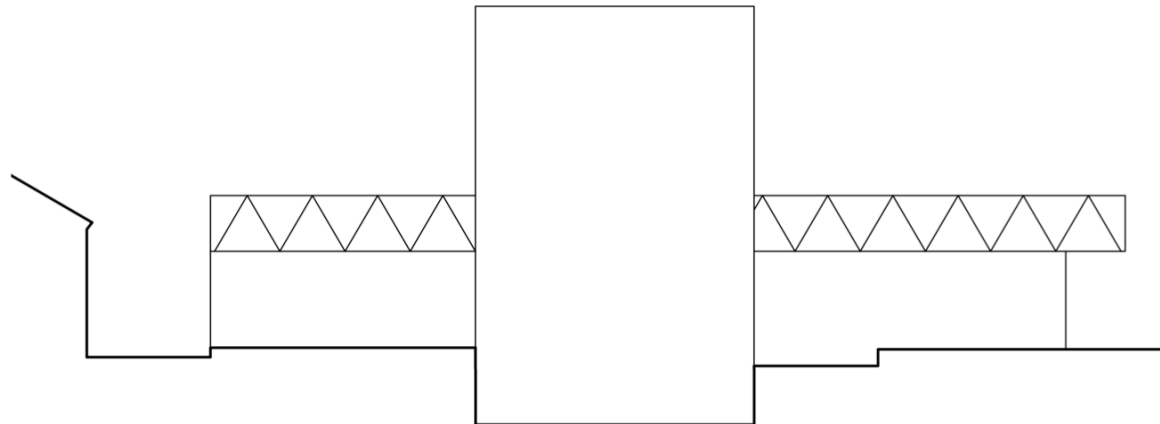
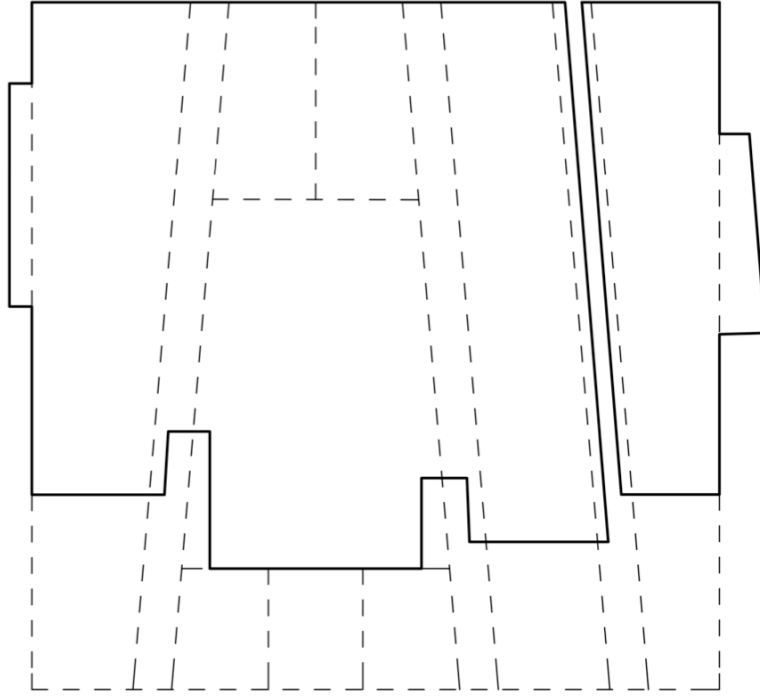
COLOURING & DETAILING – Red



COLOURING & DETAILING – Red

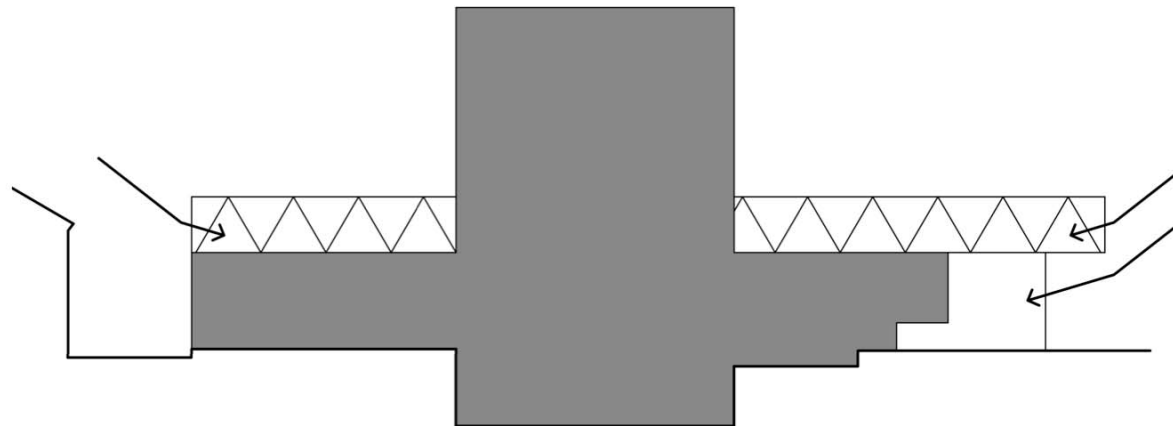
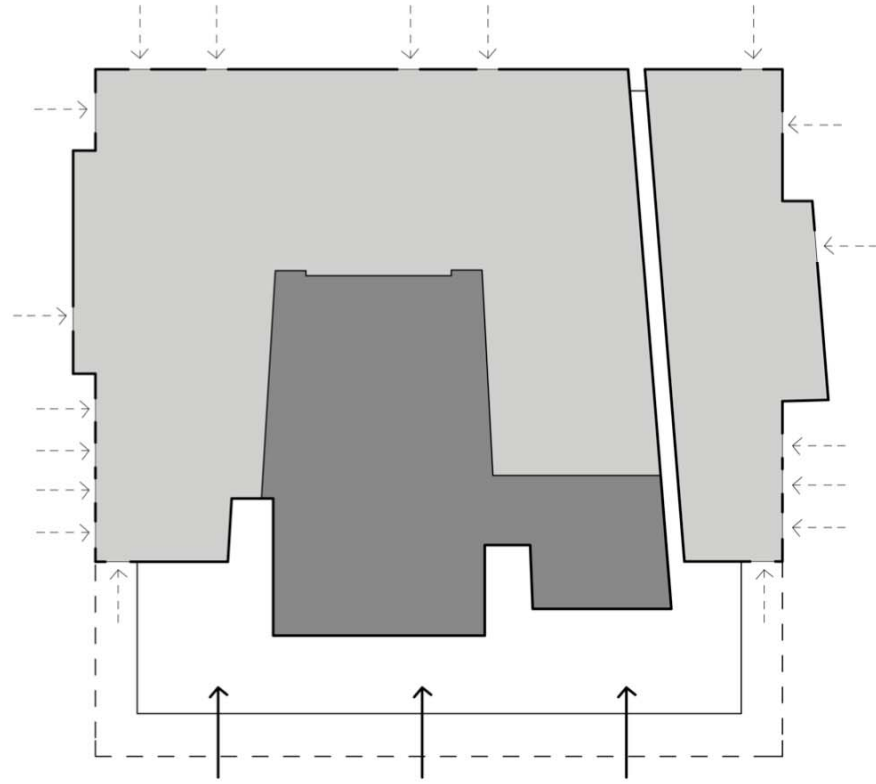


COLOURING & DETAILING – Red

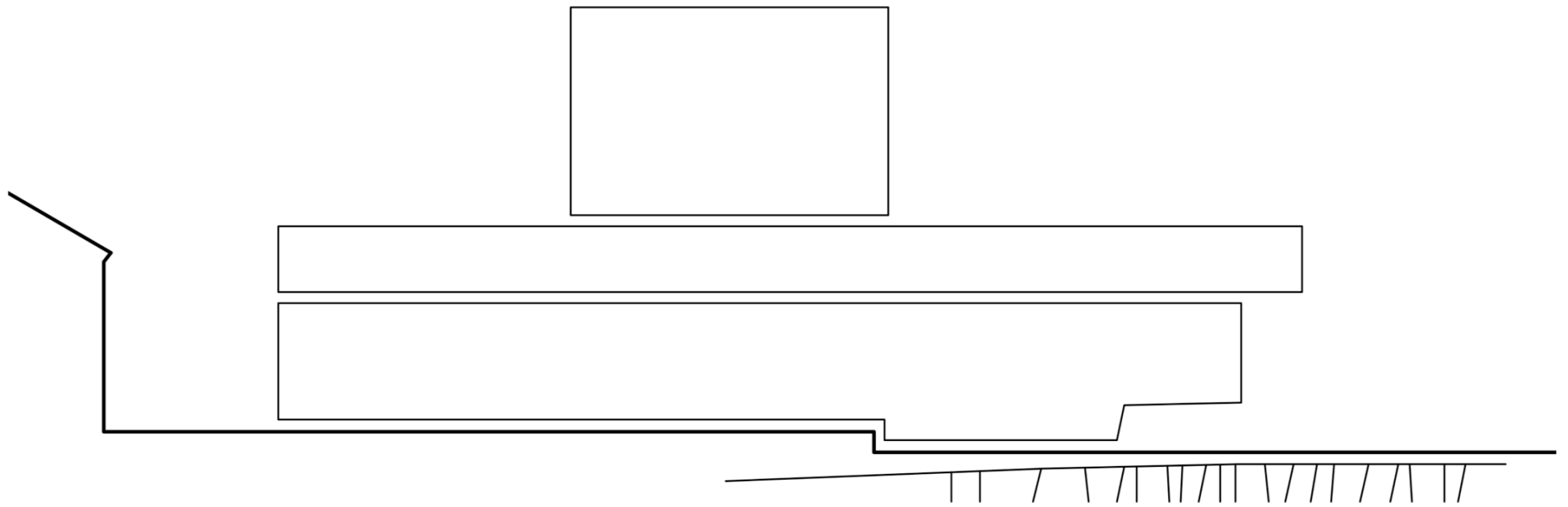


**STRUCTURAL SYSTEM OR GRID**

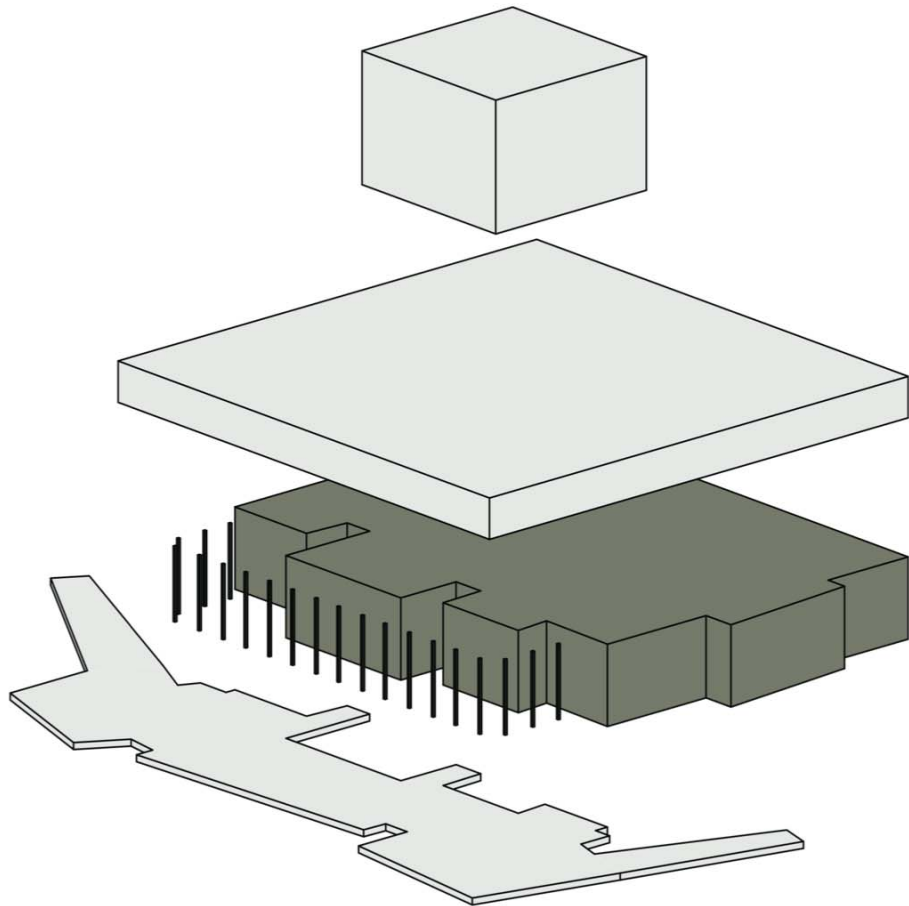
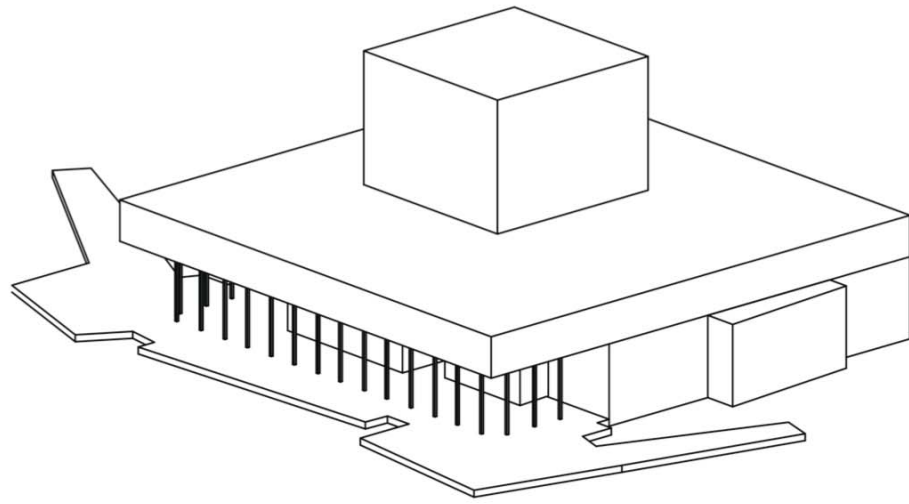




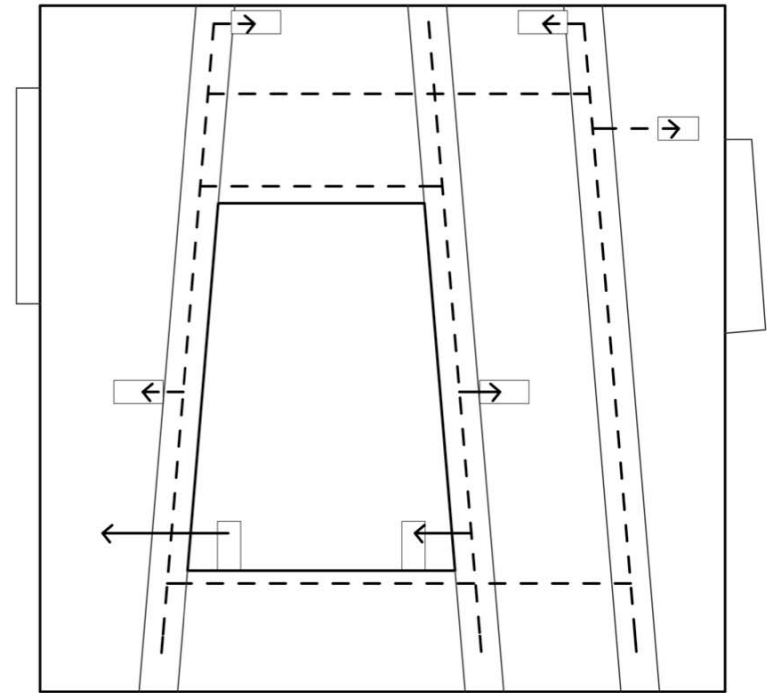
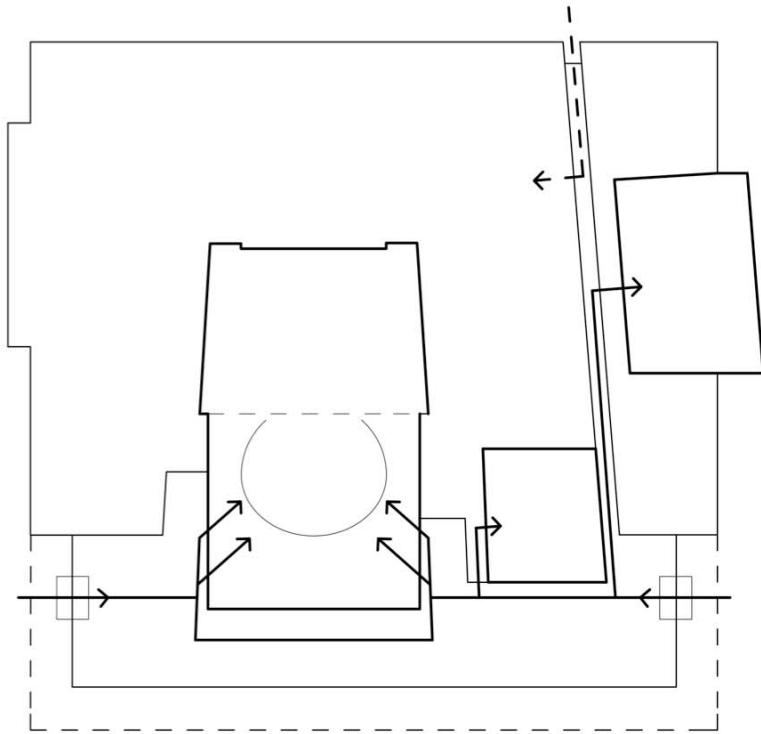
LIGHT – surprisingly light for a normally 'black box'



**MASSING**

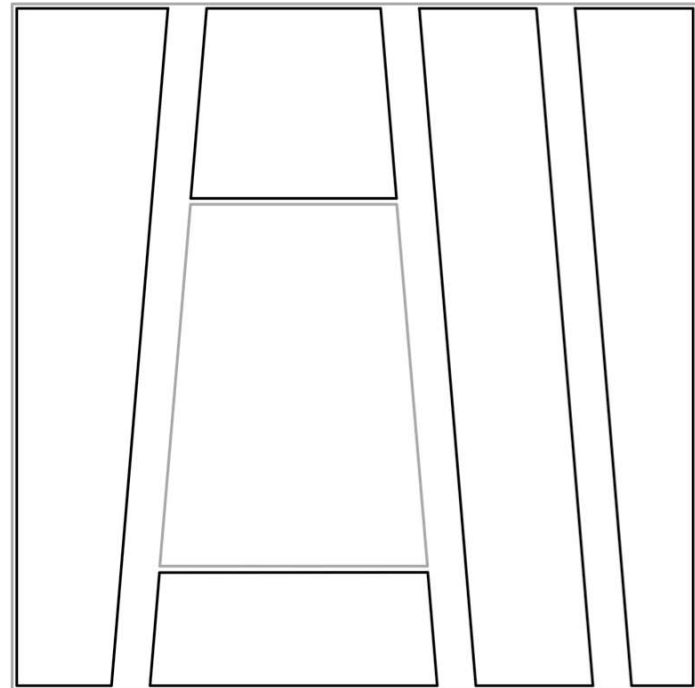
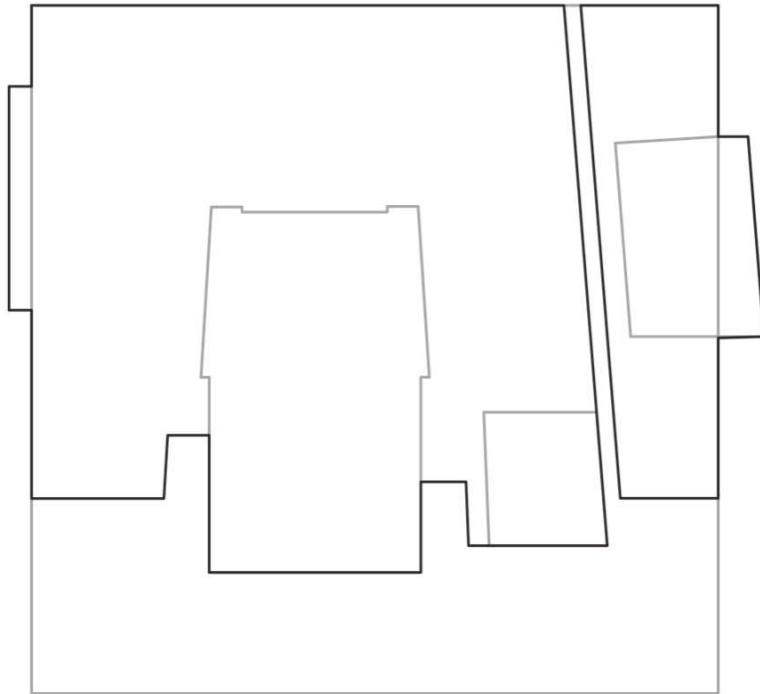


MASSING

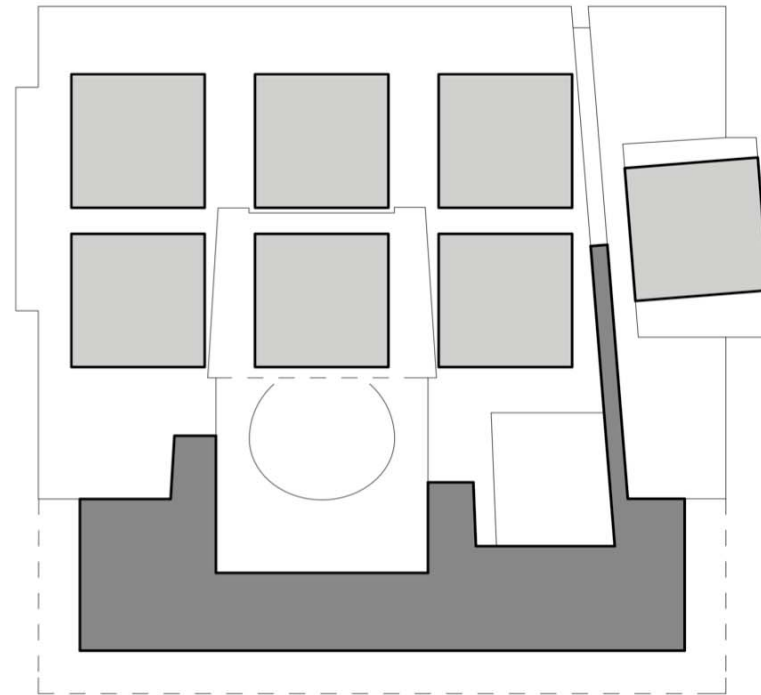


— — → Private - Staff / Actors  
 ———→ Public - Watching shows / restaurant

**FLOW – CIRCULATION TO USE SPACE**

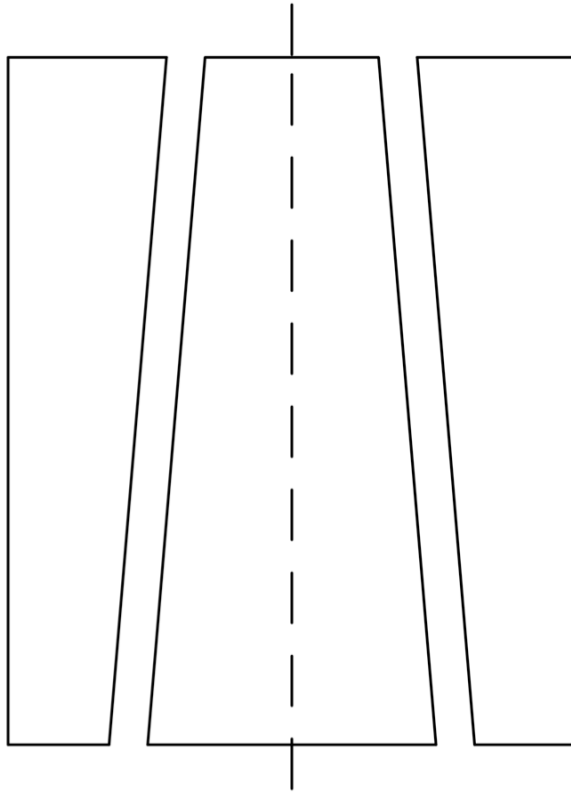


UNIT OR WHOLE – stages & office units within the whole square

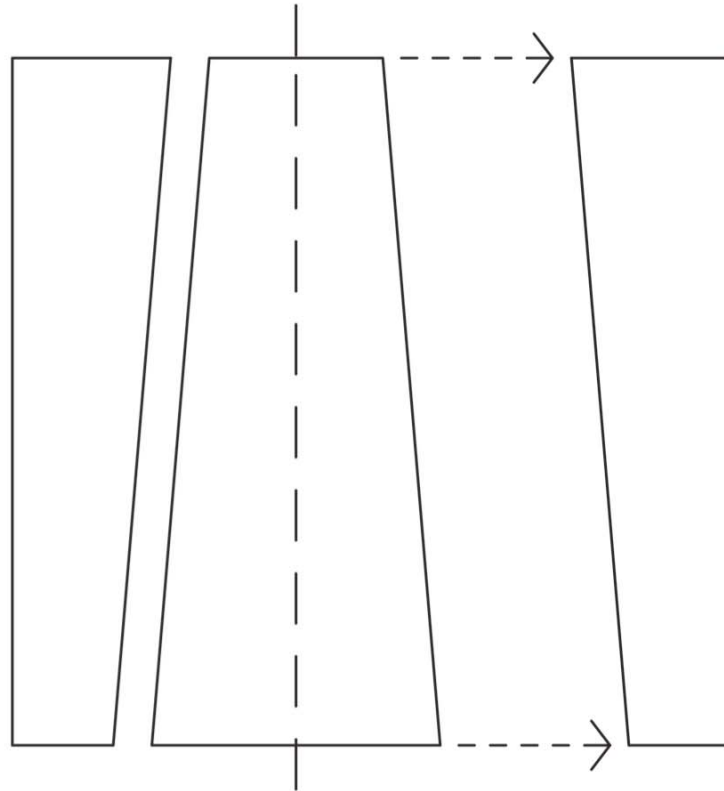


Repetitive stage sizes vs. unique foyer space

**REPETITIVE TO UNIQUE**

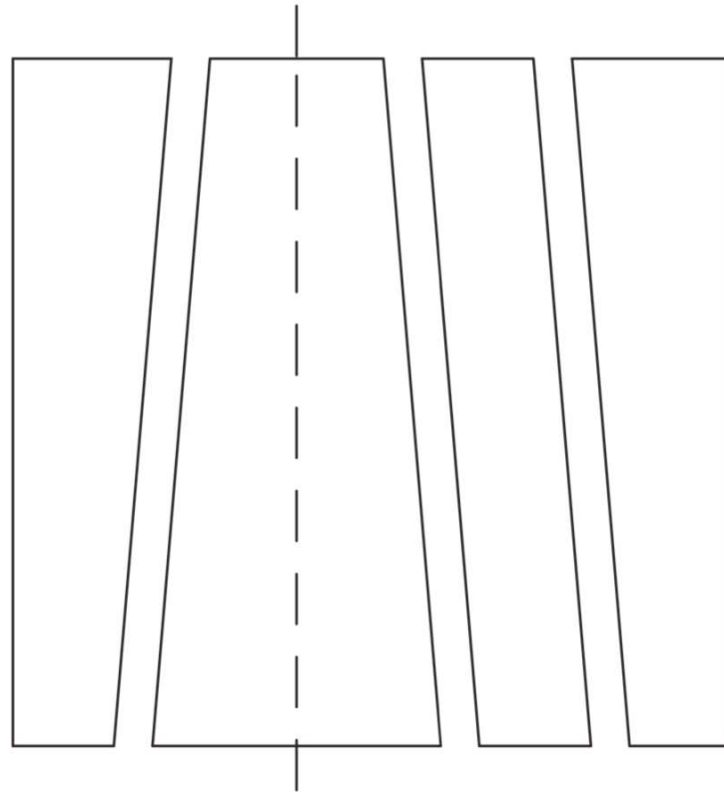


**SYMMETRY AND BALANCE**

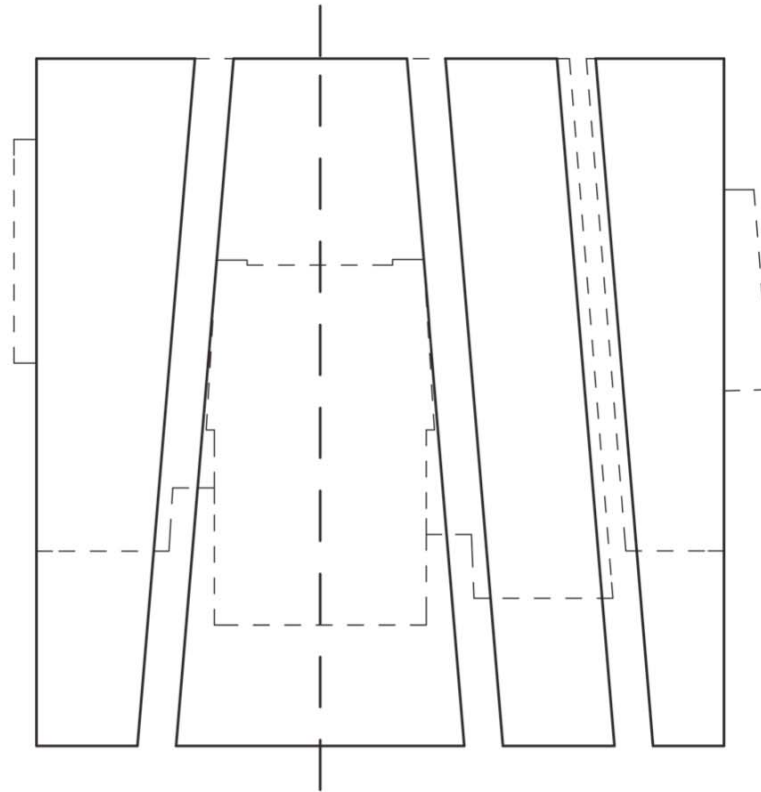


**SYMMETRY AND BALANCE**

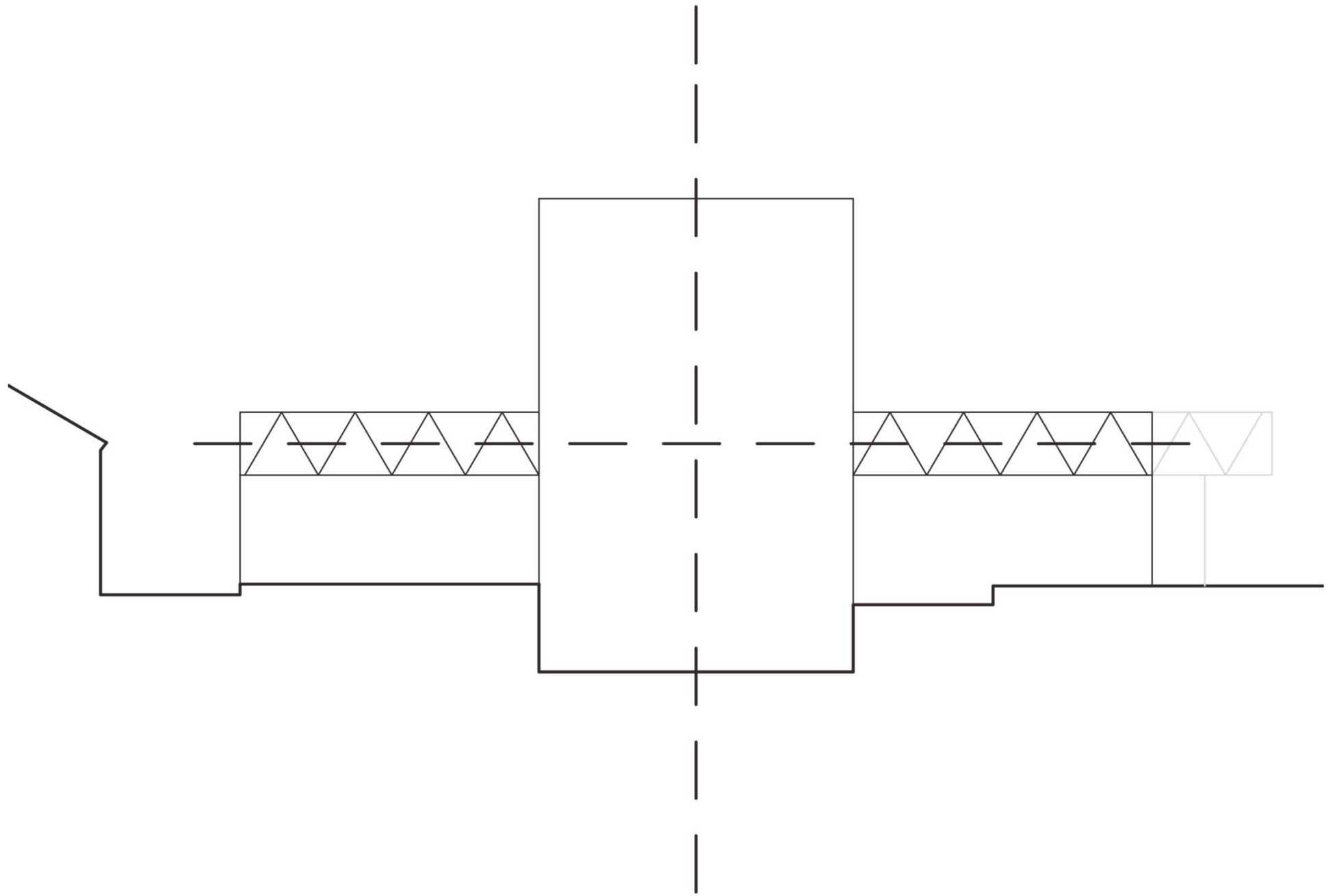




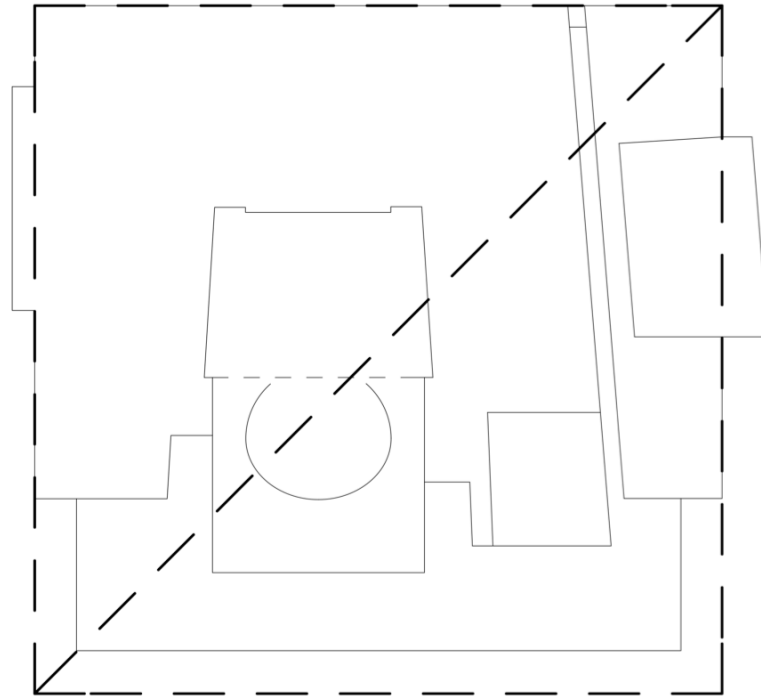
**SYMMETRY AND BALANCE**



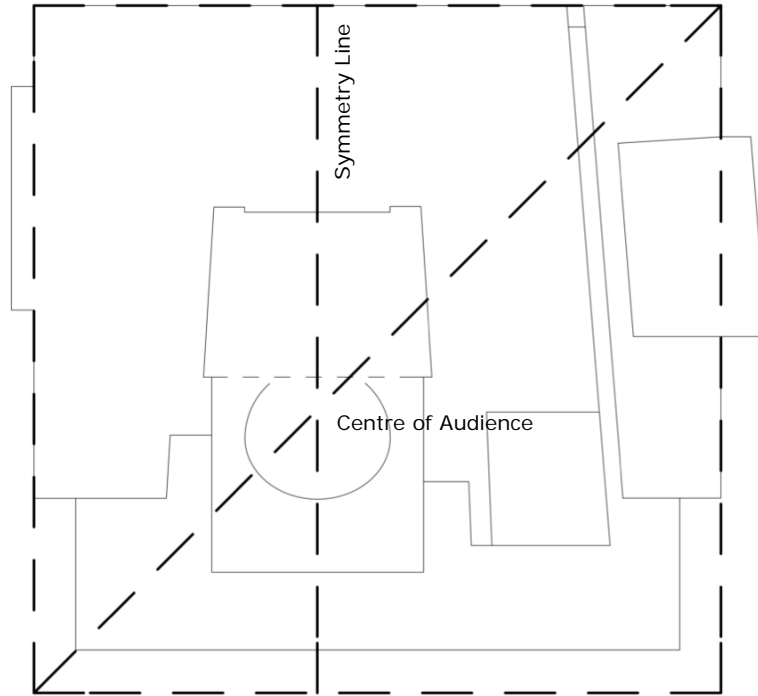
**SYMMETRY AND BALANCE**



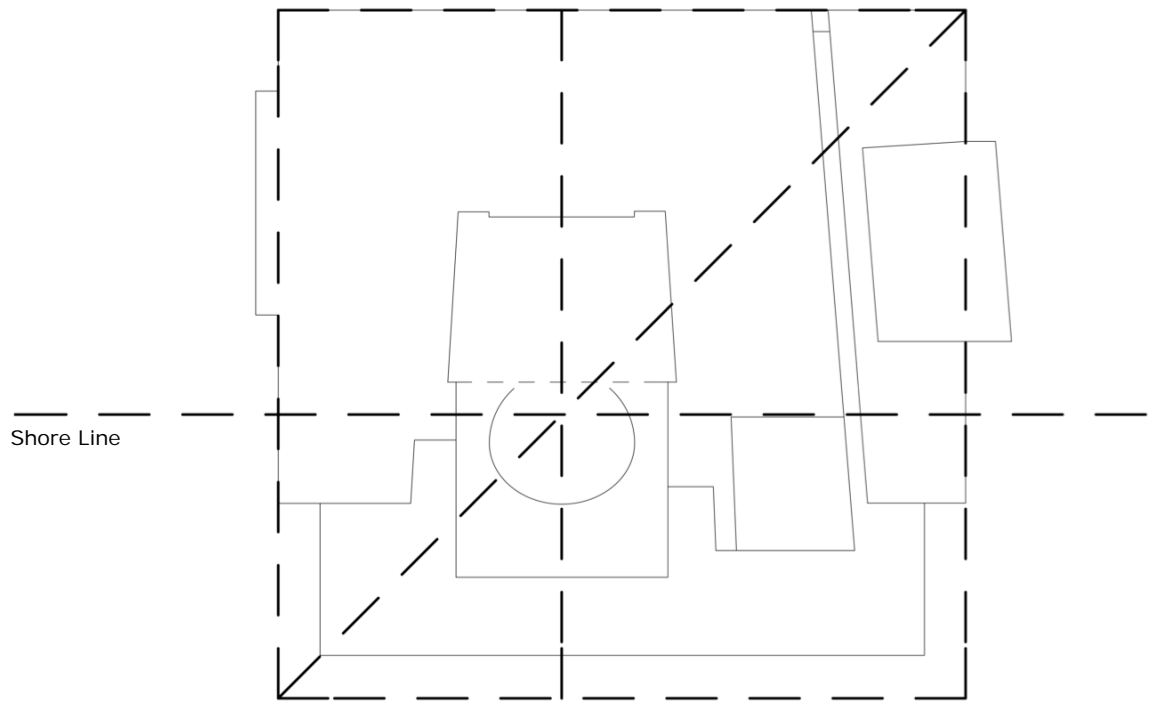
**SYMMETRY AND BALANCE**



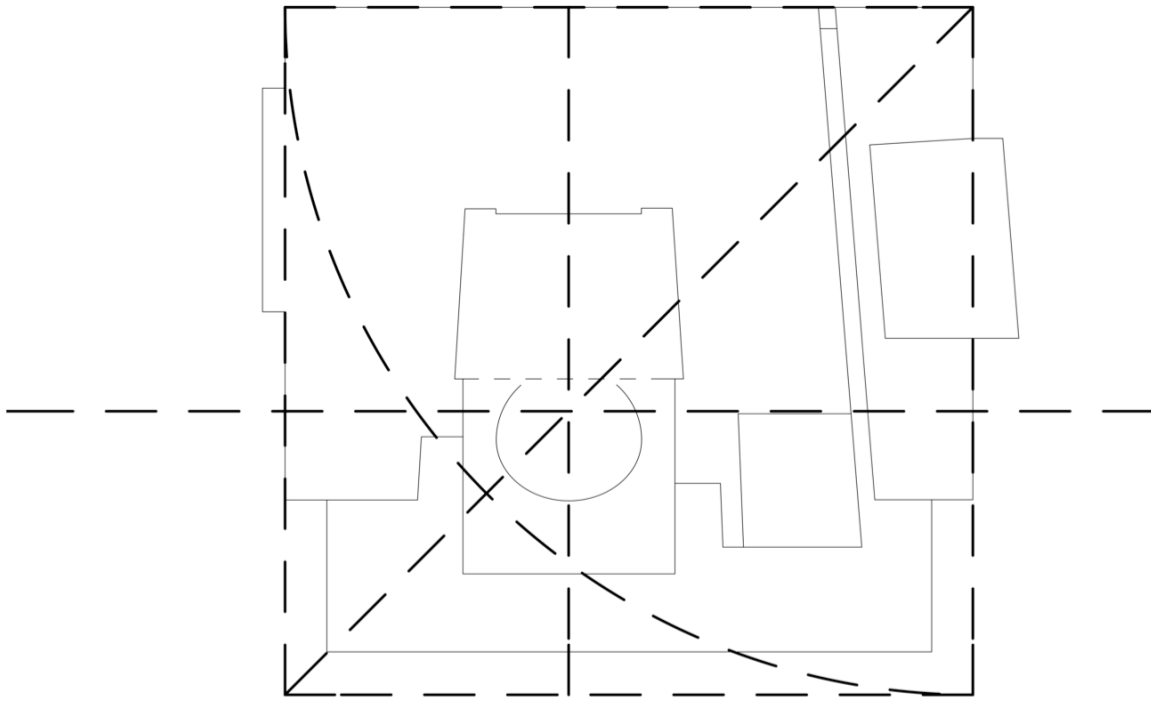
GEOMETRY



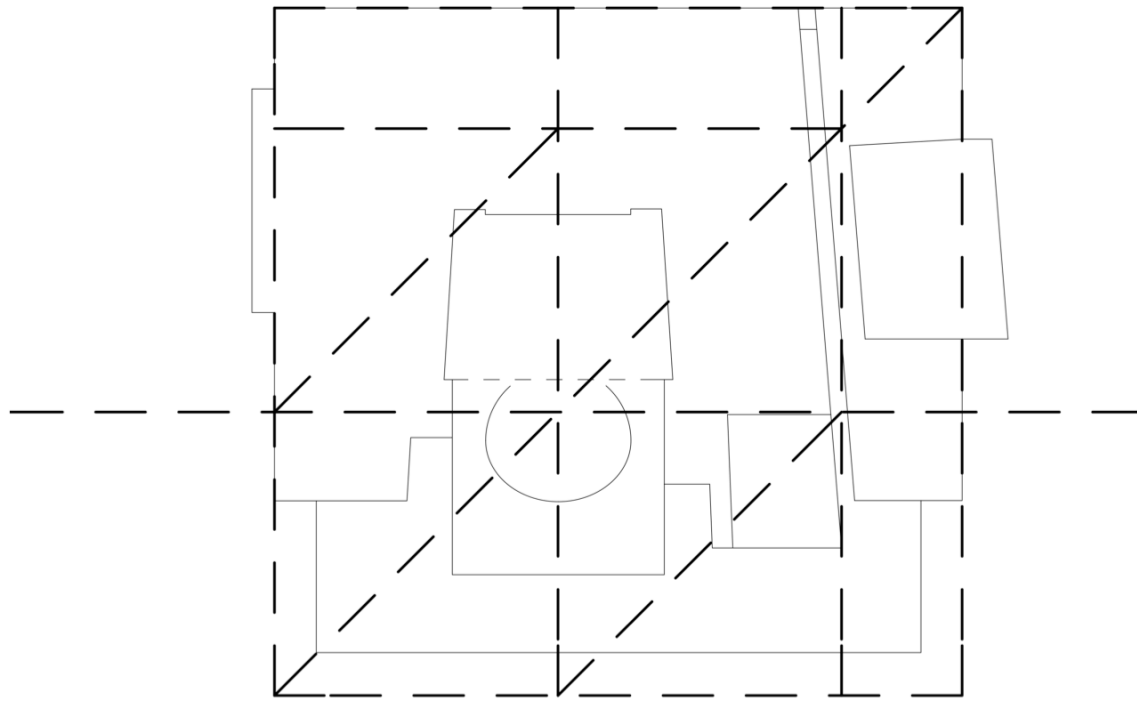
GEOMETRY



GEOMETRY

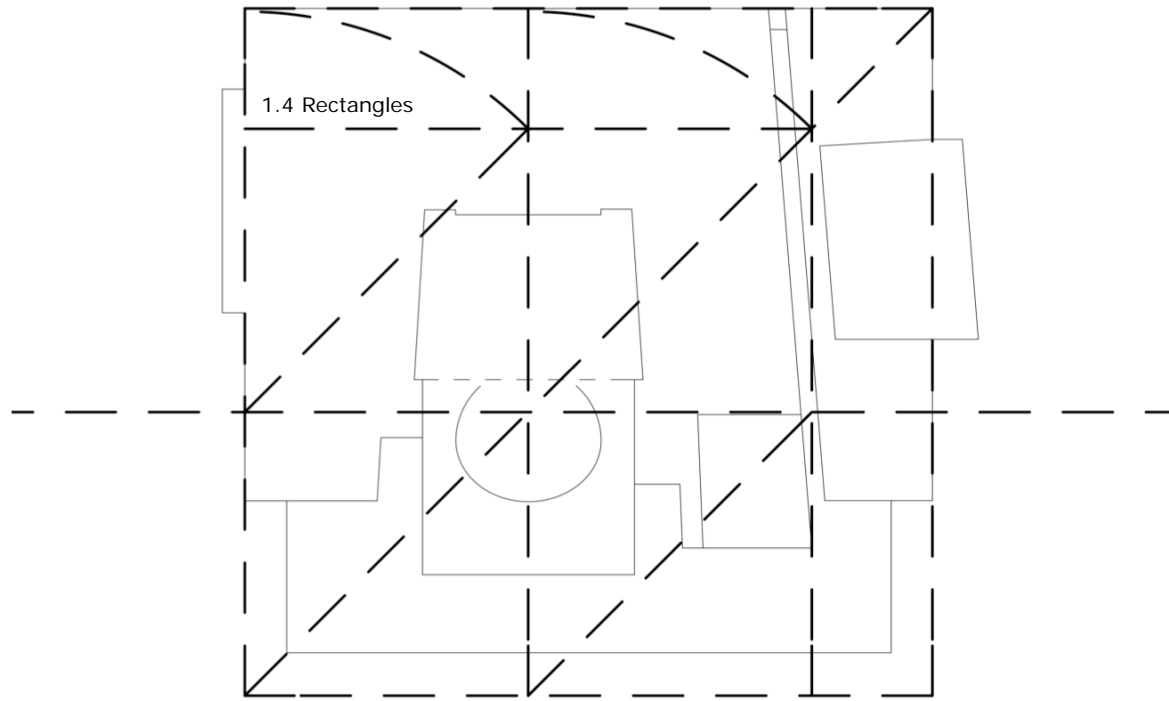


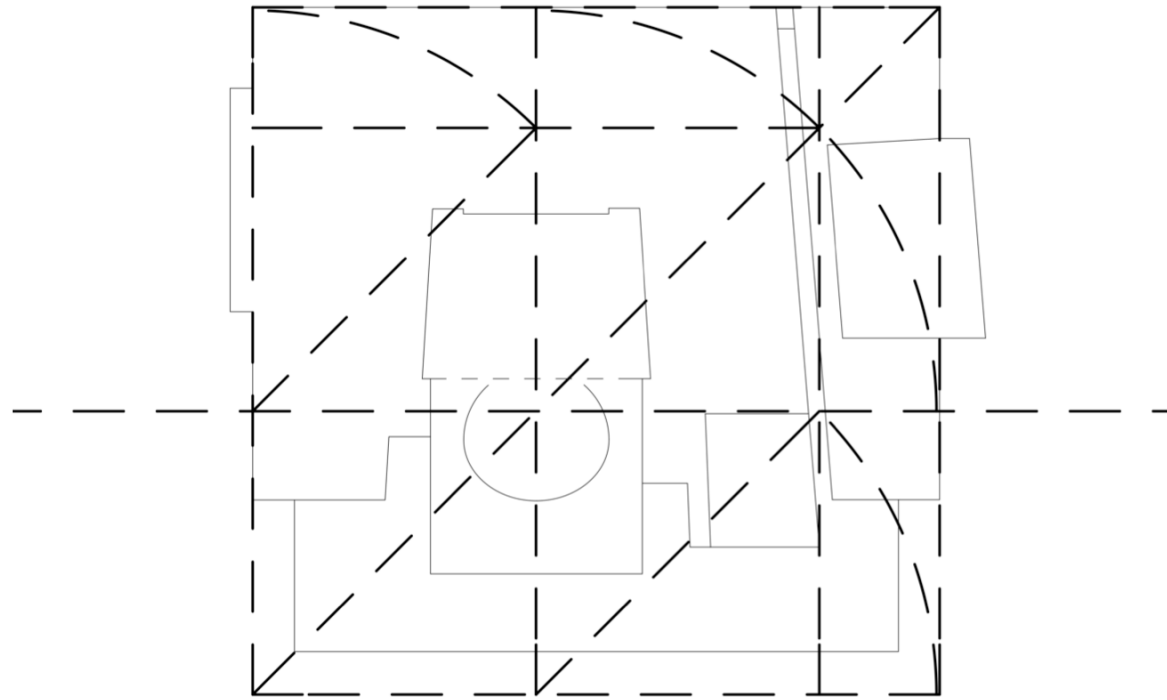
GEOMETRY



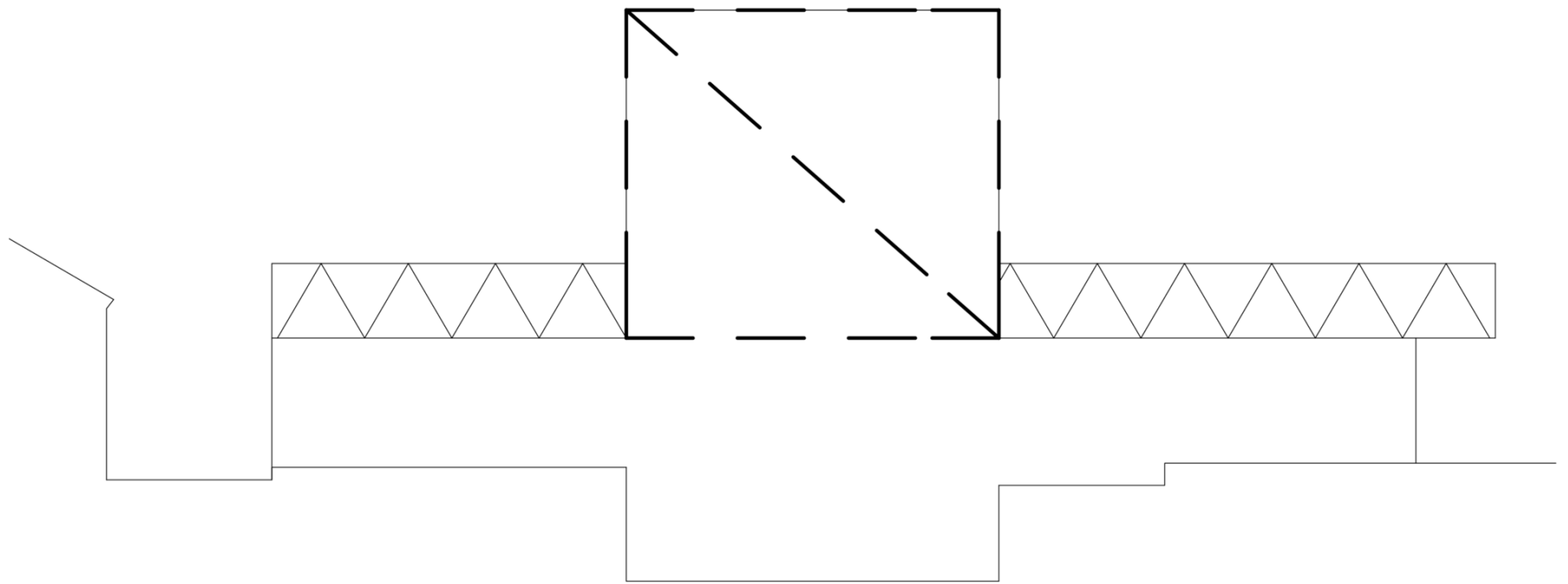
GEOMETRY



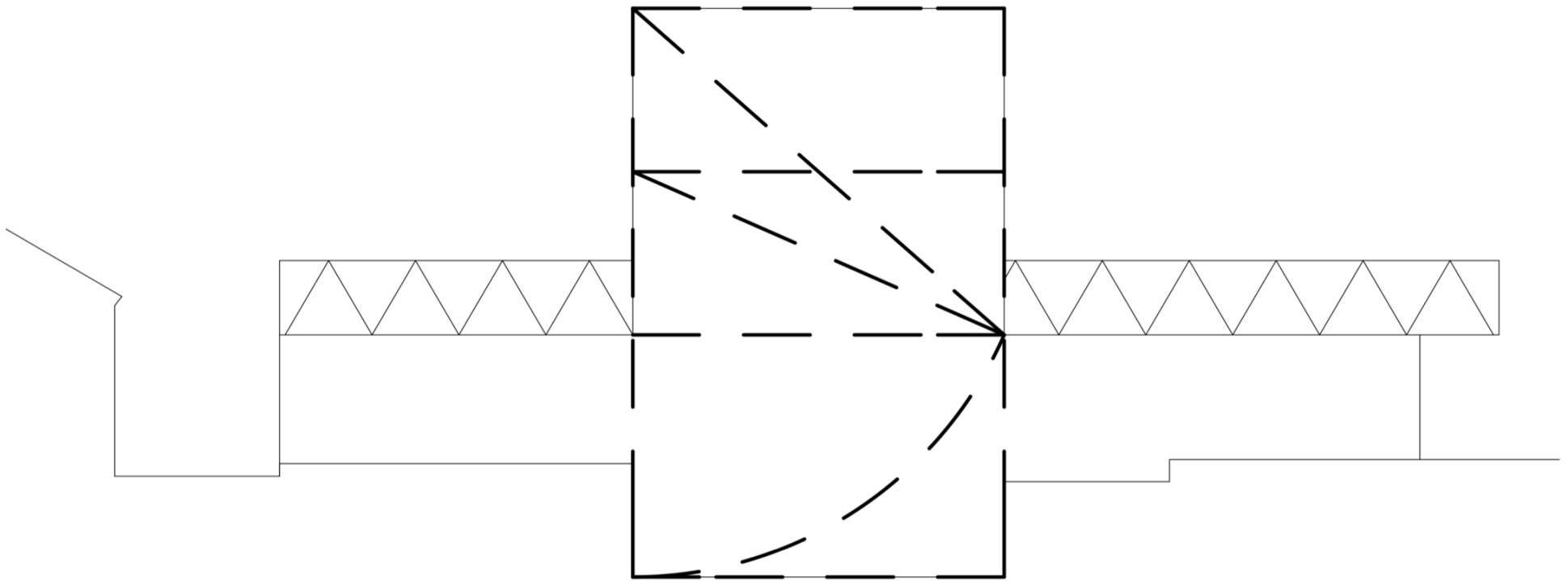




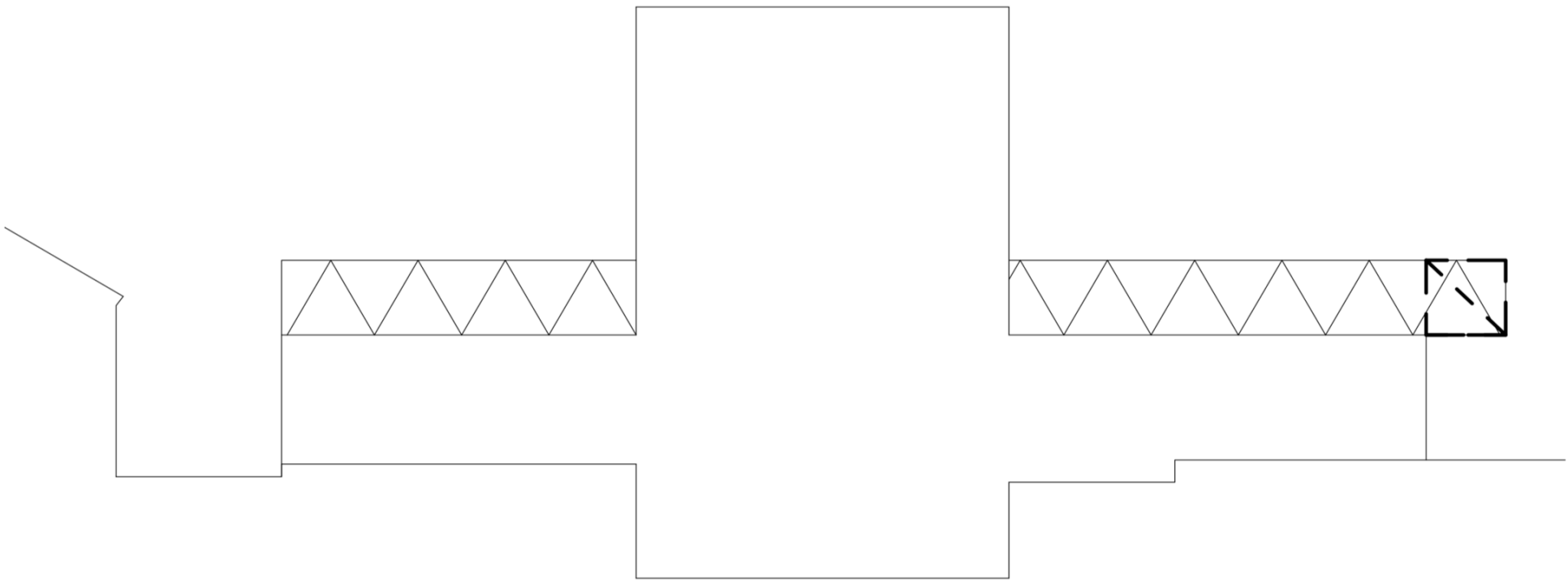
GEOMETRY



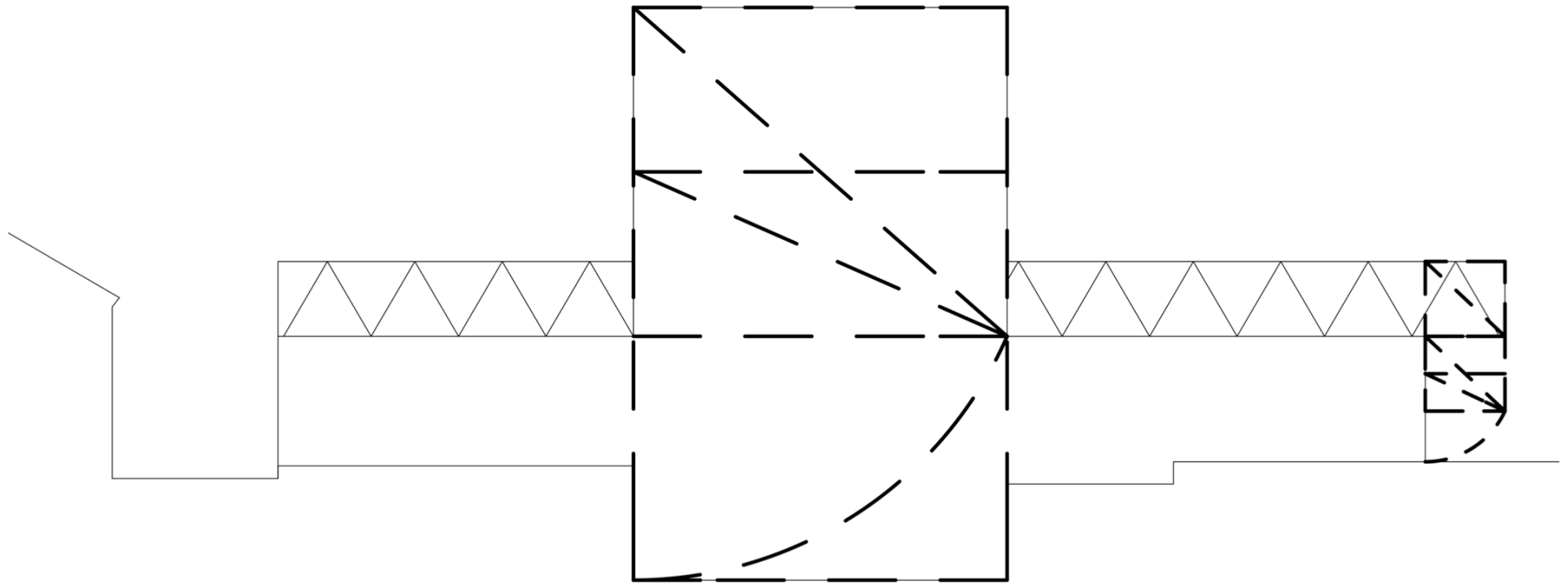
**GEOMETRY**



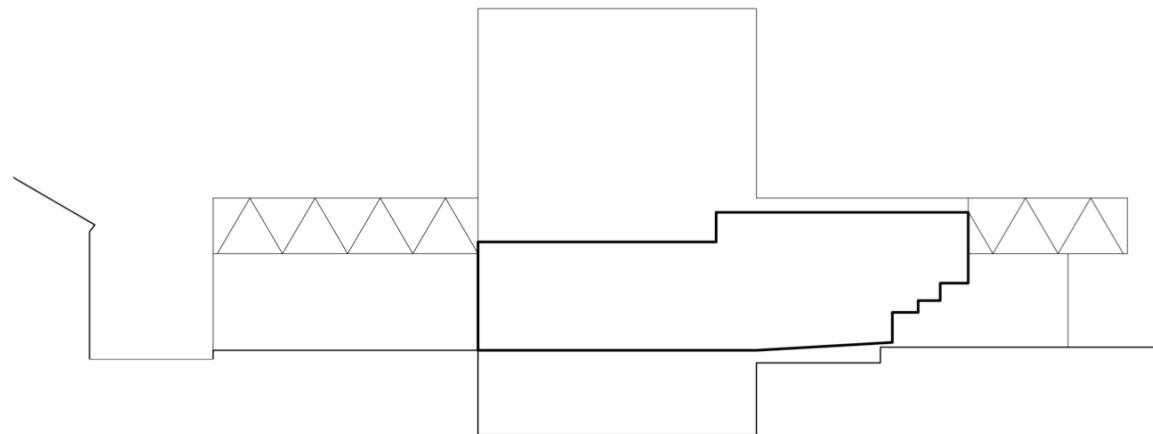
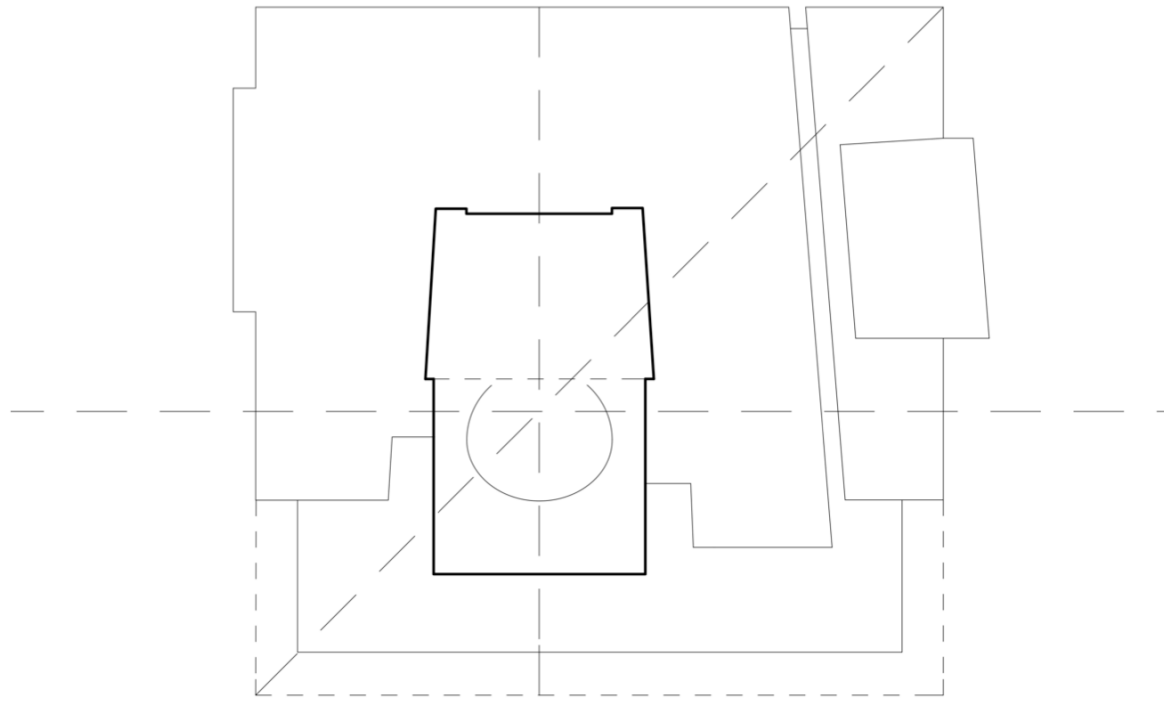
1.6 Rectangles - heights



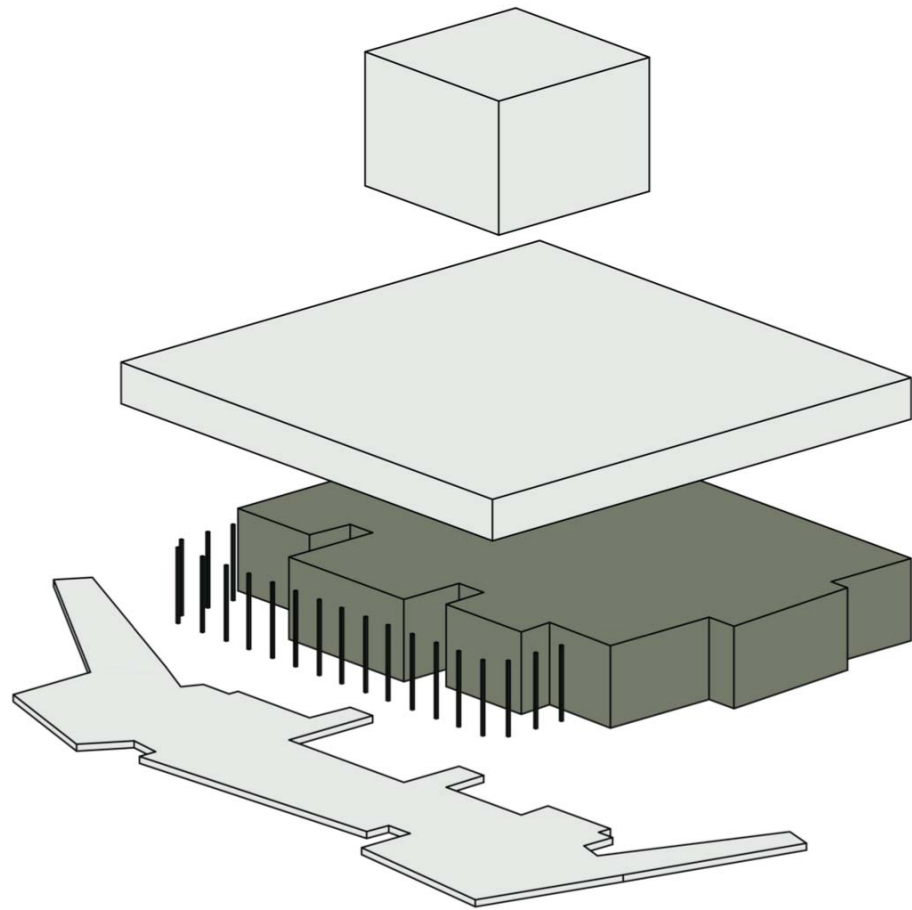
**GEOMETRY**



**GEOMETRY**

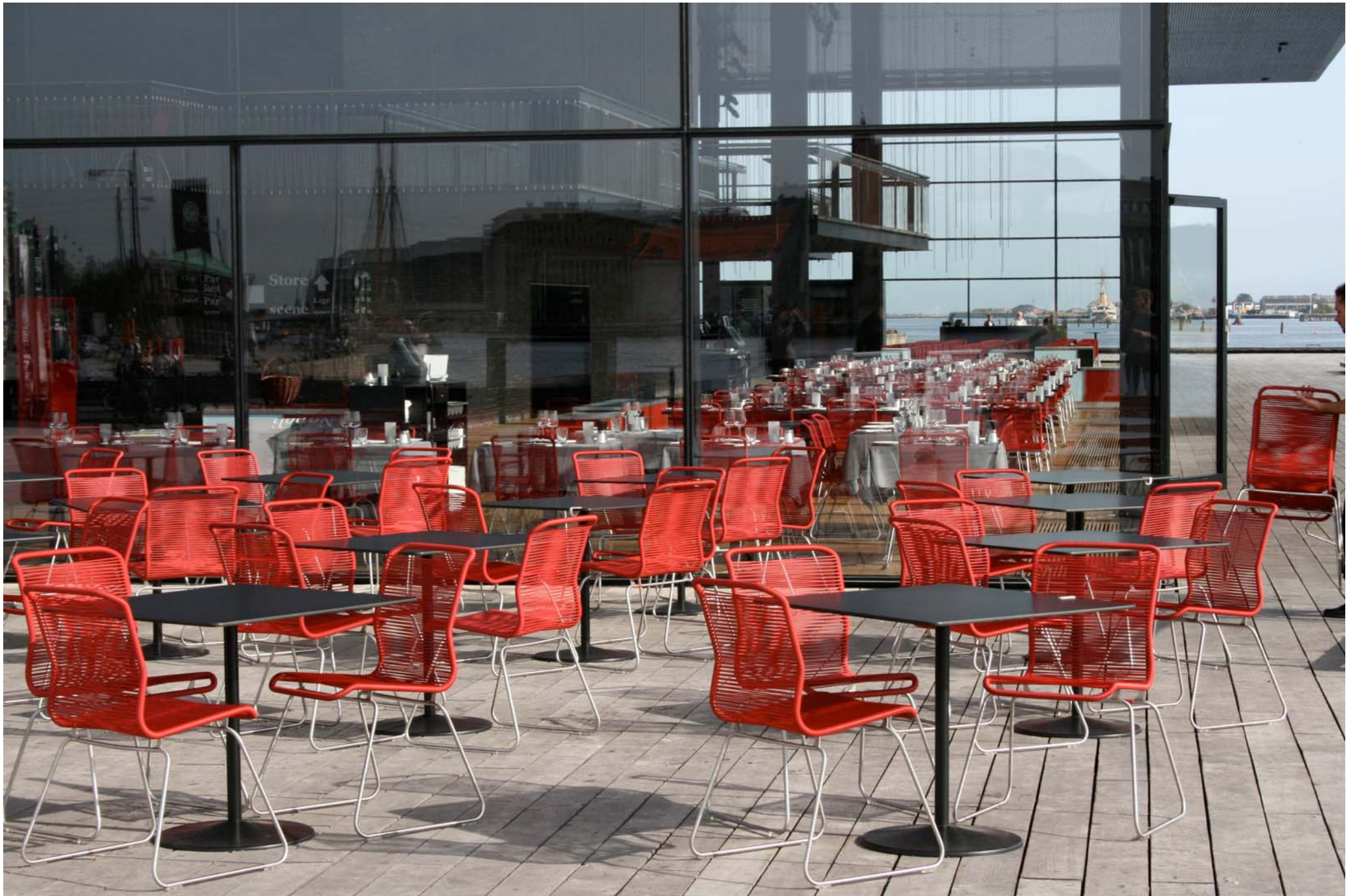


HIERARCHY – 'a scooped out grotto'



HIERARCHY – 'a scooped out grotto'





**THE ROYAL PLAYHOUSE, COPENHAGEN**

**ABF111 – Rachael McCall**



After analyzing this building the most interesting point, relates to the seem-less link between the strict geometry, balance, symmetry and massing and its successful relationship with the site and the history behind the site, theatre and city.

## SUMMARY